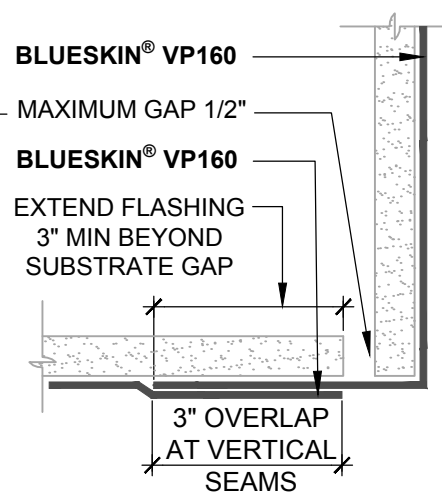
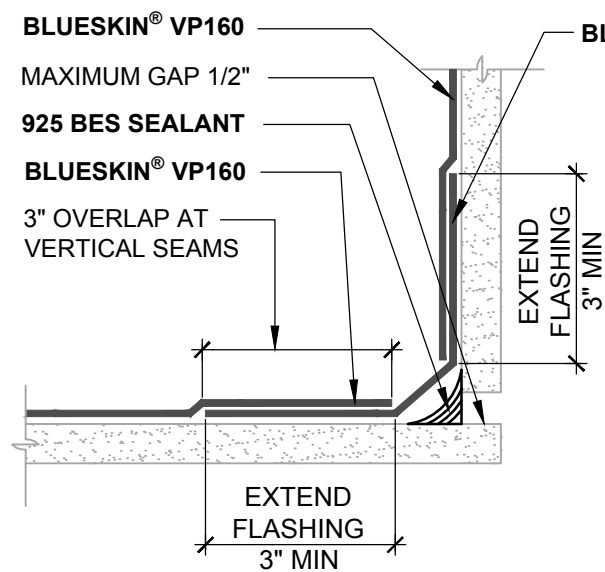


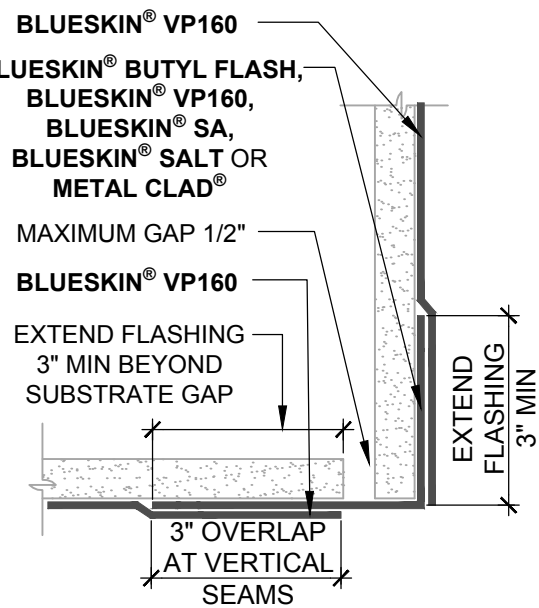
**INSIDE CORNER DETAIL (PLAN VIEW)  
METHOD A**



**OUTSIDE CORNER DETAIL (PLAN VIEW)  
METHOD A**



**INSIDE CORNER DETAIL (PLAN VIEW)  
METHOD B**



**OUTSIDE CORNER DETAIL (PLAN VIEW)  
METHOD B**

**NOTES:**

1. DETAIL SHOWS **BLUESKIN® VP160** ASSEMBLY INSTALLED OVER EXTERIOR GRADE SHEATHING. ACCEPTABLE SUBSTRATES INCLUDE PLYWOOD, OSB, CONCRETE, GYPSUM BOARD AND CONCRETE BLOCK.
2. PRETREAT INSIDE CORNERS WITH A 1/2" BEAD OF **925 BES SEALANT**. TOOL SEALANT IMMEDIATELY AFTER APPLICATION TO FORM A SMOOTH FILLET BEAD.
3. PRIME **BLUESKIN® VP160** WHERE **BLUESKIN® SA, BLUESKIN® SALT OR METAL CLAD®** LAP ONTO **BLUESKIN® VP160**. RECOMMENDED PRIMERS/ADHESIVES INCLUDE: **BLUESKIN® LVC ADHESIVE, AQUATAC™ PRIMER OR BLUESKIN® ADHESIVE**.
4. WRAP **BLUESKIN® VP160** A MINIMUM OF 3" PAST CHANGE OF PLANE AT INSIDE AND OUTSIDE CORNERS.
5. ENSURE MINIMUM OF 2" OVERLAP AT HORIZONTAL LAPS AND 3" OVERLAP AT VERTICAL LAPS.
6. INSULATION, CLADDING AND OPTIONAL VAPOR BARRIER NOT SHOWN FOR CLARITY.
7. REFER TO **BLUESKIN® VP160** INSTALLATION MANUAL FOR RECOMMENDED INSTALLATION PROCEDURES.

**Henry**®

999 Sepulveda Blvd., Suite 800  
El Segundo, CA 90245  
800-486-1278 • www.henry.com

MANUFACTURER GUIDE DETAILS ARE FOR REFERENCE ONLY. HENRY® DOES NOT ASSUME RESPONSIBILITY FOR ERRORS OR DEVIATIONS IN DESIGN OR ENGINEERING. PROJECT SPECIFIC VERIFICATION IS RECOMMENDED PRIOR TO INSTALLATION.

**BLUESKIN® VP160 SELF-ADHERED WATER RESISTIVE AIR BARRIER**

**INSIDE AND OUTSIDE  
CORNERS**

SCALE: N.T.S.

06-20-2017

**BSVP160-3A**