

212 SEALANT

(TROWEL SEALANT UNTIL MEMBRANE EDGE IS FULLY COATED TO PROMOTE WATER SHEDDING)

INSTALL **BLUESKIN® VP160** 2" MIN FROM ROUGH OPENING

BLUESKIN® VP160, BLUESKIN® BUTYL FLASH, BLUESKIN® SA, BLUESKIN® SALT, METAL CLAD® OR AIR-BLOC® LF

BLUESKIN® BUTYL FLASH, BLUESKIN® SA, BLUESKIN® SALT OR METAL CLAD®

SET WINDOW FLANGE INTO A BED OF **925 BES SEALANT** (APPLY INTERMITTENTLY ON SILL FLANGE TO ALLOW DRAINAGE)

EXTEND FLASHING 3" MIN ONTO EXTERIOR SHEATHING

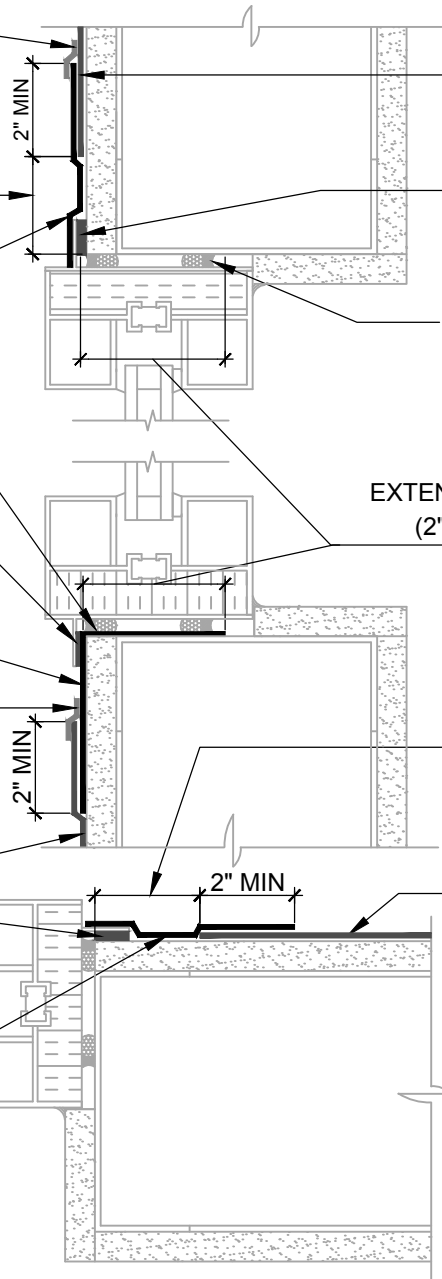
212 SEALANT

(TROWEL SEALANT UNTIL MEMBRANE EDGE IS FULLY COATED TO PROMOTE WATER SHEDDING)

BLUESKIN® VP160

SET WINDOW FLANGE INTO A BED OF **925 BES SEALANT** OR AS SPECIFIED BY WINDOW MANUFACTURER

BLUESKIN® VP160, BLUESKIN® BUTYL FLASH, BLUESKIN® SA, BLUESKIN® SALT, METAL CLAD® OR AIR-BLOC® LF



BLUESKIN® VP160

HEAD

SET WINDOW FLANGE INTO A BED OF **925 BES SEALANT** OR AS SPECIFIED BY WINDOW MANUFACTURER

CONFIRM SEALANT COMPATIBILITY WITH ALL SUBSTRATES AND ADJACENT PRODUCTS PRIOR TO INSTALLATION

EXTEND FLASHING 3" RECOMMENDED (2" MIN) INTO ROUGH OPENING

SILL

INSTALL **BLUESKIN® VP160** 2" MIN FROM ROUGH OPENING

BLUESKIN® VP160

JAMB

NOTES:

1. DETAIL SHOWS **BLUESKIN® VP160** ASSEMBLY INSTALLED OVER EXTERIOR GRADE SHEATHING. ACCEPTABLE SUBSTRATES INCLUDE PLYWOOD, OSB, CONCRETE, GYPSUM BOARD AND CONCRETE BLOCK.
2. INSTALL FLASHING AT SILL PAN EXTENDING 6" MINIMUM UP JAMB.
3. WINDOW FLASHING RECOMMENDATIONS ARE BASED OFF ASTM E2112 AND MAY VARY DEPENDING ON PROJECT SPECIFIC REQUIREMENTS. WINDOW INSTALLATION REQUIREMENTS TO BE VERIFIED BY DESIGN PROFESSIONAL.
4. PRIME **BLUESKIN® VP160** WHERE **BLUESKIN® SA, BLUESKIN® SALT OR METAL CLAD®** LAP ONTO **BLUESKIN® VP160**. RECOMMENDED PRIMERS/ADHESIVES INCLUDE: **BLUESKIN® LVC ADHESIVE, AQUATAC™ PRIMER OR BLUESKIN® ADHESIVE.**
5. INSULATION, CLADDING AND OPTIONAL VAPOR BARRIER NOT SHOWN FOR CLARITY.
6. REFER TO **BLUESKIN® VP160** INSTALLATION MANUAL FOR RECOMMENDED INSTALLATION PROCEDURES.

Henry®

999 Sepulveda Blvd., Suite 800
El Segundo, CA 90245
800-486-1278 • www.henry.com

MANUFACTURER GUIDE DETAILS ARE FOR REFERENCE ONLY. HENRY® DOES NOT ASSUME RESPONSIBILITY FOR ERRORS OR DEVIATIONS IN DESIGN OR ENGINEERING. PROJECT SPECIFIC VERIFICATION IS RECOMMENDED PRIOR TO INSTALLATION.

BLUESKIN® VP160 SELF-ADHERED WATER RESISTIVE AIR BARRIER

FLANGED WINDOW

METHOD A - **BLUESKIN® VP160** INSTALLED AFTER SELF-ADHERED FLASHING

SCALE: N.T.S.

06-20-2017

BSVP160-6A2A