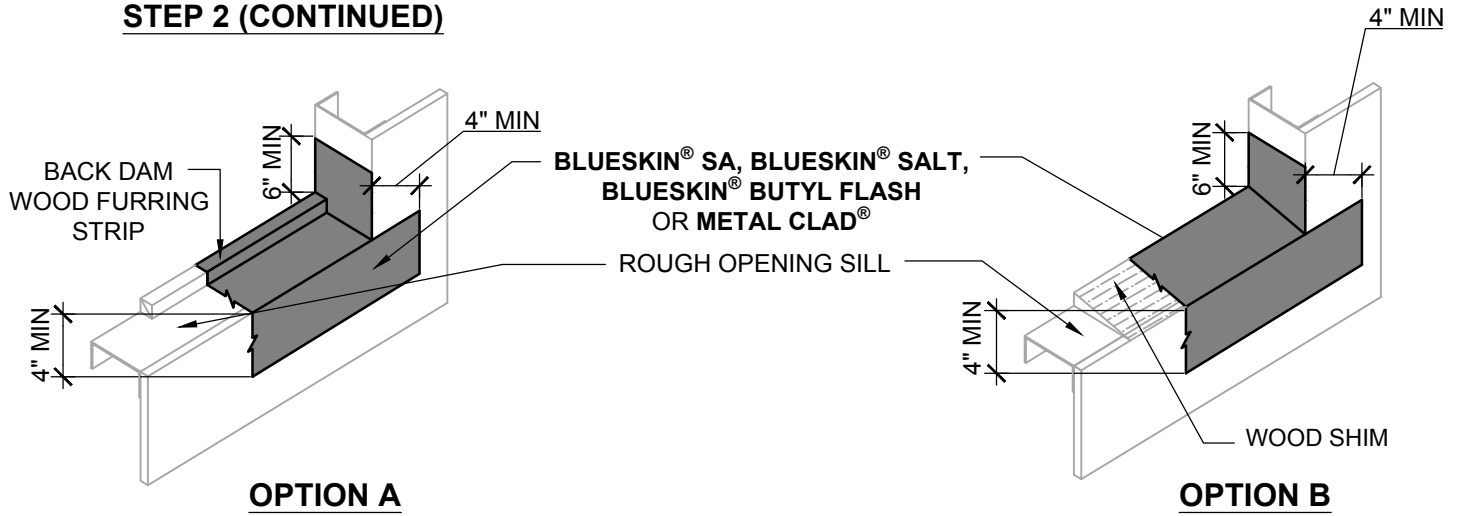
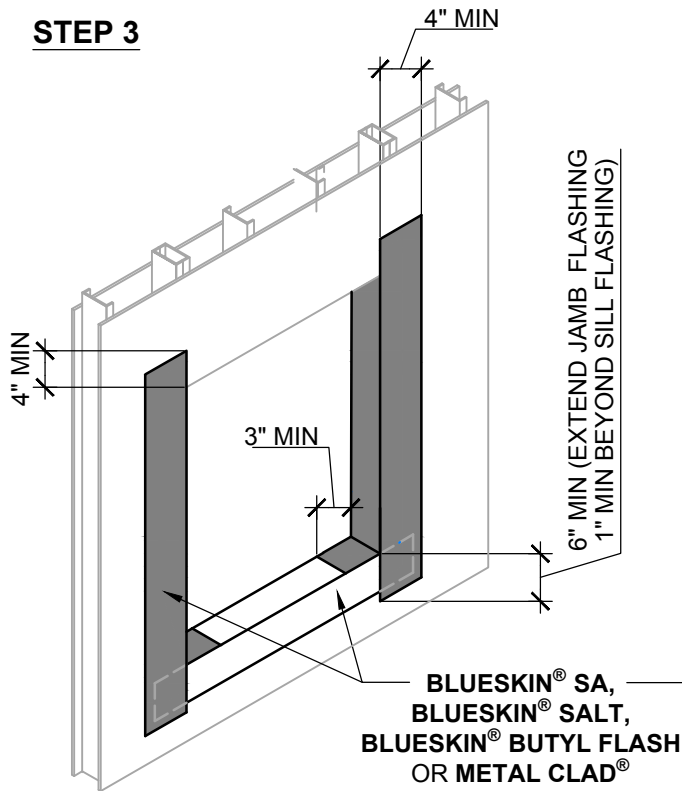


**BLUESKIN® VP160** REBATE WINDOW DETAIL GUIDELINES CONSISTS OF THREE PARTS.  
REFER TO DETAIL BSVP160-6B1A FOR PREVIOUS STEPS 1-2  
AND DETAIL BSVP160-6B1C FOR STEPS 5-7.

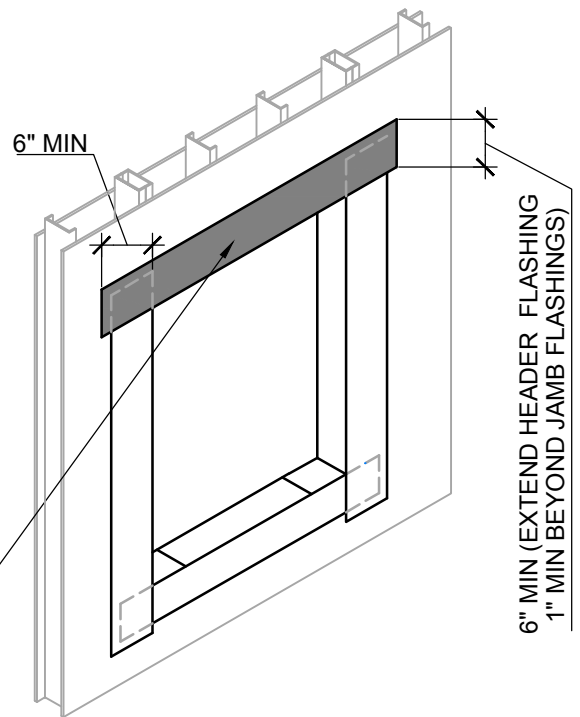
**STEP 2 (CONTINUED)**



**STEP 3**



**STEP 4**



**NOTES:**

- REFER TO NOTES BSVP160-6B1A.

**Henry®**

999 Sepulveda Blvd., Suite 800  
El Segundo, CA 90245  
800-486-1278 • www.henry.com

MANUFACTURER GUIDE DETAILS ARE FOR REFERENCE ONLY. HENRY® DOES NOT ASSUME RESPONSIBILITY FOR ERRORS OR DEVIATIONS IN DESIGN OR ENGINEERING. PROJECT SPECIFIC VERIFICATION IS RECOMMENDED PRIOR TO INSTALLATION.

**BLUESKIN® VP160 SELF-ADHERED WATER RESISTIVE AIR BARRIER**

**REBATE WINDOW**

METHOD A - **BLUESKIN® VP160** INSTALLED AFTER  
SELF-ADHERED FLASHING PART 2 OF 3

SCALE: N.T.S.

06-20-2017

**BSVP160-6B1B**