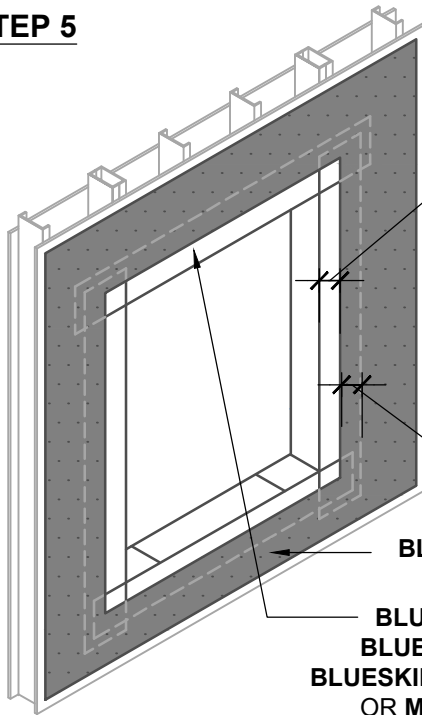


BLUESKIN® VP160 REBATE WINDOW DETAIL GUIDELINES CONSIST OF THREE PARTS. REFER TO DETAILS BSVP160-6B1A AND BSVP160-6B1B FOR PREVIOUS STEPS 1-4.

STEP 5



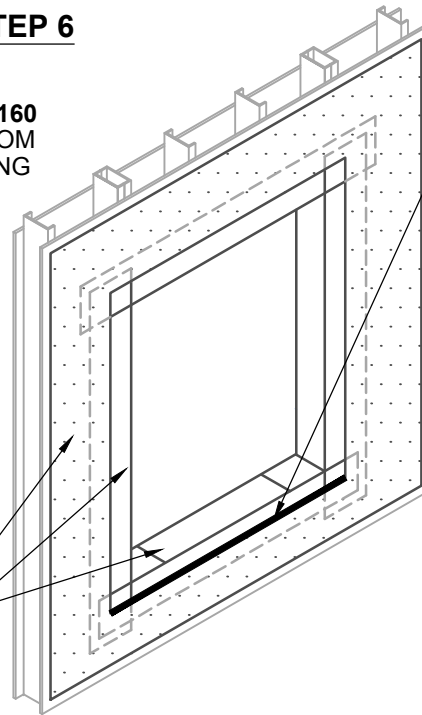
STEP 6

INSTALL **BLUESKIN® VP160** 2" MINIMUM FROM ROUGH OPENING

OVERLAP **BLUESKIN® VP160** ONTO FLASHING 2" MIN

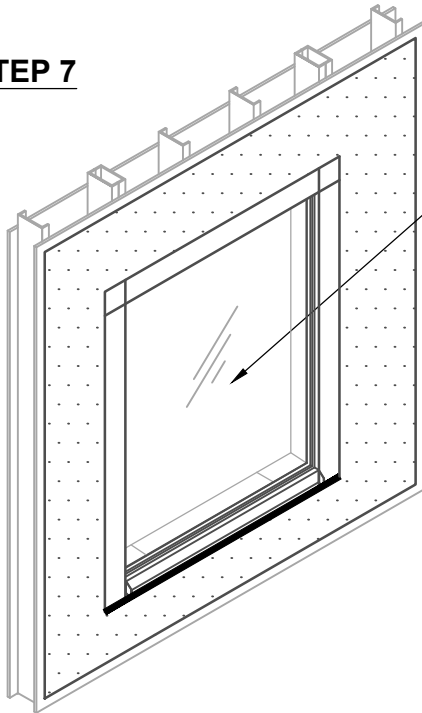
BLUESKIN® VP160

BLUESKIN® SA, BLUESKIN® SALT, BLUESKIN® BUTYL FLASH OR METAL CLAD®



SEAL REVERSE LAP EDGES OF ROUGH OPENING FLASHINGS WITH **212 SEALANT** (TROWEL SEALANT UNTIL MEMBRANE IS FIRMLY COATED TO PROMOTE WATER SHEDDING)

STEP 7



INSTALL REBATE WINDOW PER WINDOW MANUFACTURER REQUIREMENTS

NOTES:

1. REFER TO NOTES BSVP160-6B1A.

Henry®

999 Sepulveda Blvd., Suite 800
El Segundo, CA 90245
800-486-1278 • www.henry.com

MANUFACTURER GUIDE DETAILS ARE FOR REFERENCE ONLY. HENRY® DOES NOT ASSUME RESPONSIBILITY FOR ERRORS OR DEVIATIONS IN DESIGN OR ENGINEERING. PROJECT SPECIFIC VERIFICATION IS RECOMMENDED PRIOR TO INSTALLATION.

BLUESKIN® VP160 SELF-ADHERED WATER RESISTIVE AIR BARRIER

REBATE WINDOW

METHOD A - **BLUESKIN® VP160** INSTALLED AFTER SELF-ADHERED FLASHING PART 3 OF 3

SCALE: N.T.S.

06-20-2017

BSVP160-6B1C