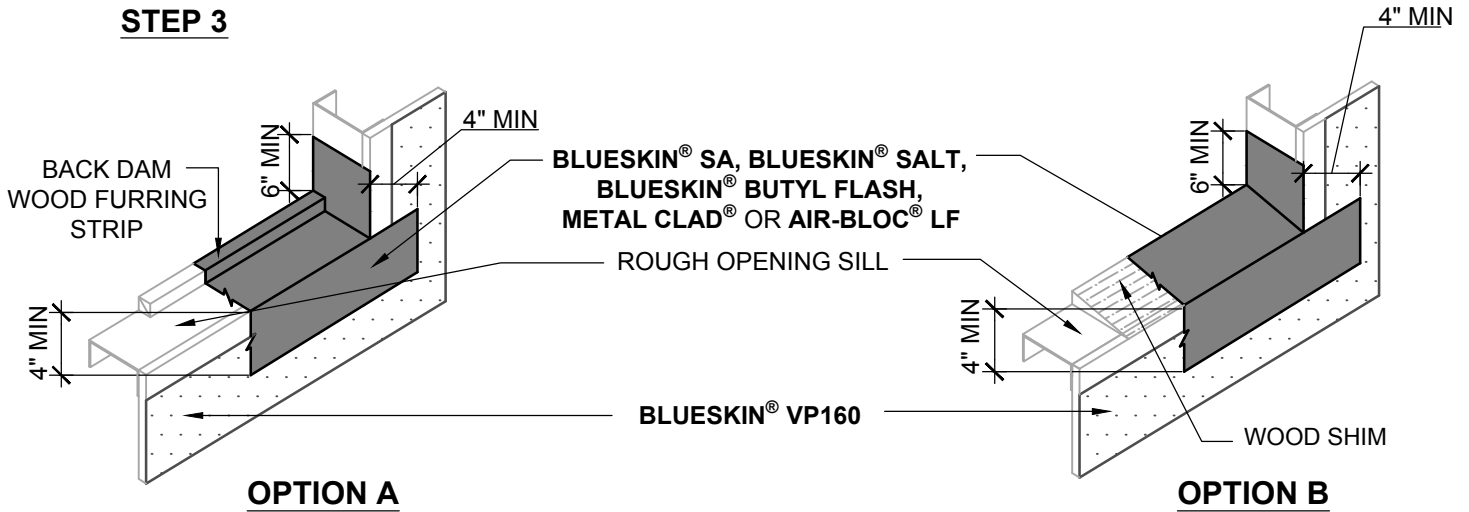
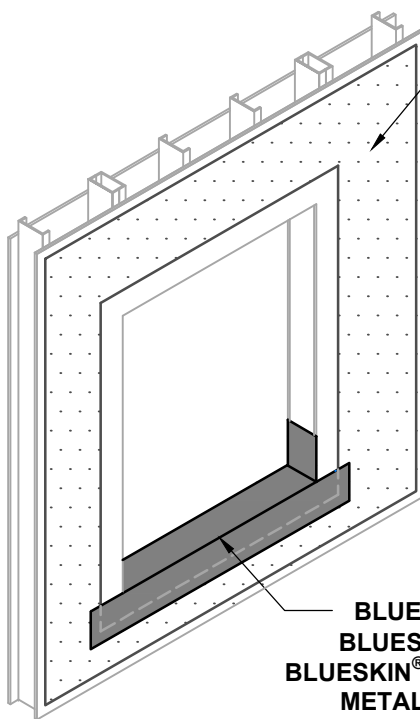


BLUESKIN® VP160 REBATE WINDOW DETAIL GUIDELINES CONSISTS OF THREE PARTS. REFER TO DETAIL BSVP160-6B2A FOR PREVIOUS STEPS 1-2 AND DETAIL BSVP160-6B2C FOR STEPS 5-7.

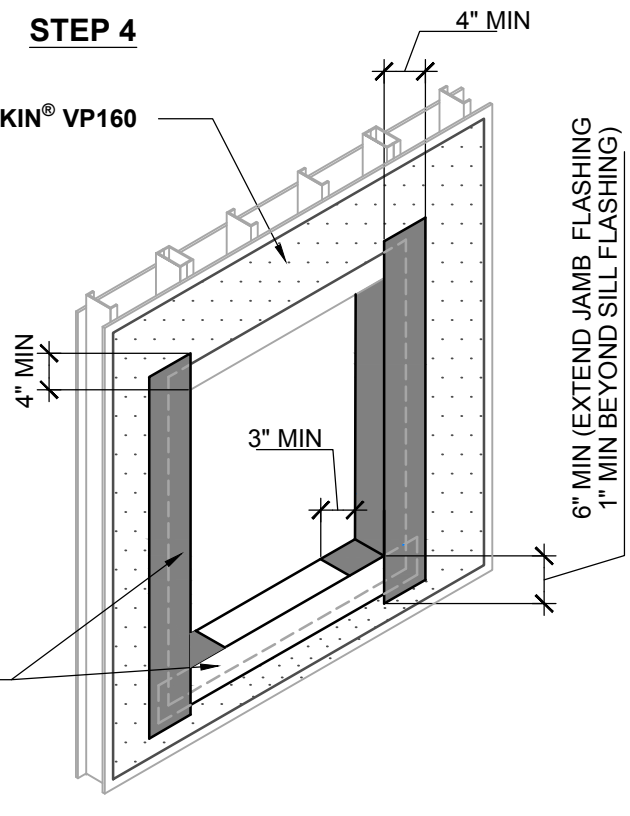
STEP 3



STEP 3 (CONTINUED)



STEP 4



NOTES:

- REFER TO NOTES BSVP160-6B2A.

Henry®

999 Sepulveda Blvd., Suite 800
El Segundo, CA 90245
800-486-1278 • www.henry.com

MANUFACTURER GUIDE DETAILS ARE FOR REFERENCE ONLY. HENRY® DOES NOT ASSUME RESPONSIBILITY FOR ERRORS OR DEVIATIONS IN DESIGN OR ENGINEERING. PROJECT SPECIFIC VERIFICATION IS RECOMMENDED PRIOR TO INSTALLATION.

BLUESKIN® VP160 SELF-ADHERED WATER RESISTIVE AIR BARRIER

REBATE WINDOW

METHOD B - **BLUESKIN® VP160** INSTALLED
BEFORE FLASHING PART 2 OF 3

SCALE: N.T.S.

06-20-2017

BSVP160-6B2B