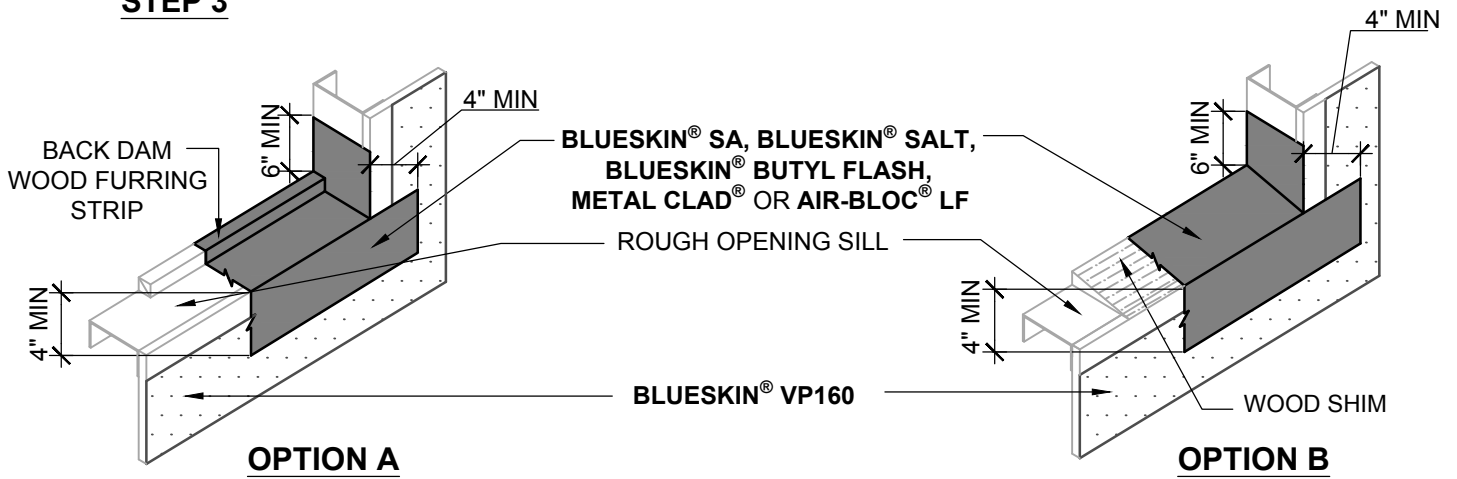


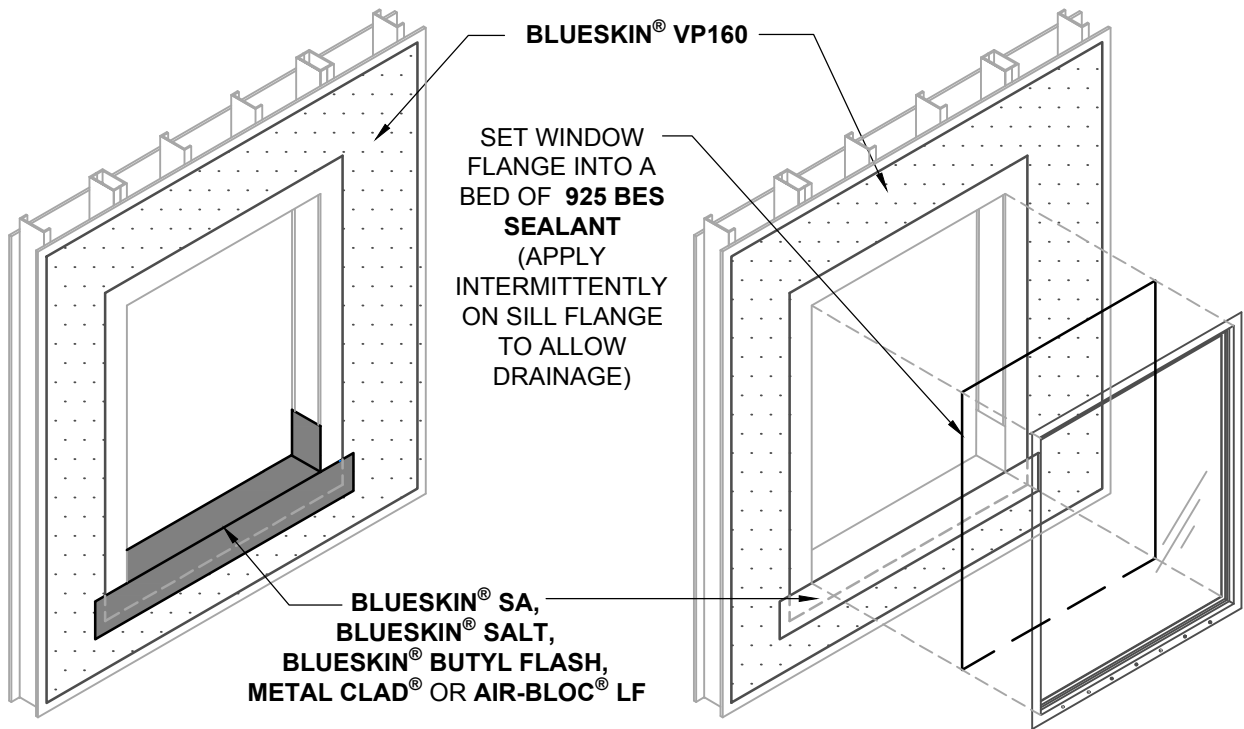
**BLUESKIN® VP160** FLANGED WINDOW DETAIL GUIDELINES CONSISTS OF THREE PARTS.  
 REFER TO DETAIL BSVP160-6C2A FOR PREVIOUS STEPS 1-2  
 AND DETAIL BSVP160-6C2C FOR STEPS 5-8.

**STEP 3**



**STEP 3 (CONTINUED)**

**STEP 4**



**NOTES:**

1. REFER TO NOTES BSVP160-6C2A.

MANUFACTURER GUIDE DETAILS ARE FOR REFERENCE ONLY. HENRY® DOES NOT ASSUME RESPONSIBILITY FOR ERRORS OR DEVIATIONS IN DESIGN OR ENGINEERING. PROJECT SPECIFIC VERIFICATION IS RECOMMENDED PRIOR TO INSTALLATION.

**Henry®**

999 Sepulveda Blvd., Suite 800  
 El Segundo, CA 90245  
 800-486-1278 • www.henry.com

**BLUESKIN® VP160 SELF-ADHERED WATER RESISTIVE AIR BARRIER**

**FLANGED WINDOW**

METHOD B - **BLUESKIN® VP160** INSTALLED  
 BEFORE FLASHING PART 2 OF 3

SCALE: N.T.S.

06-20-2017

**BSVP160-6C2B**