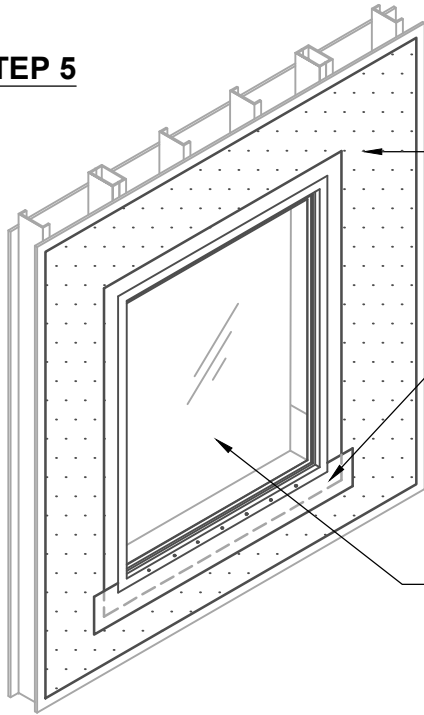


BLUESKIN® VP160 FLANGED WINDOW DETAIL GUIDELINES CONSIST OF THREE PARTS. REFER TO DETAILS BSVP160-6C2A AND BSVP160-6C2B FOR PREVIOUS STEPS 1-4.

STEP 5

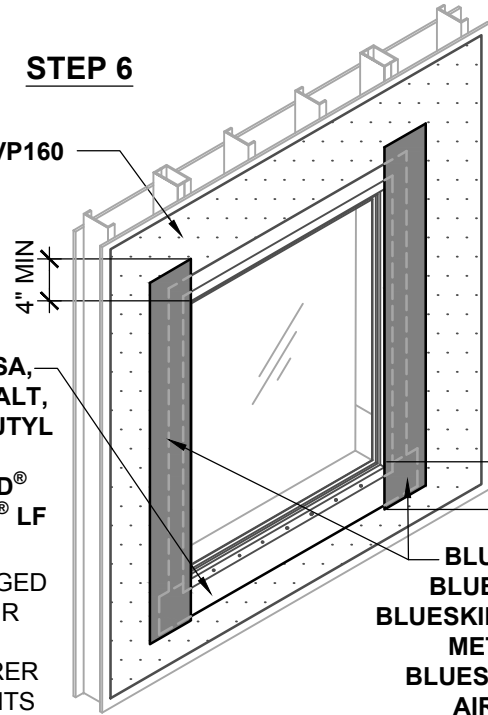


BLUESKIN® VP160

BLUESKIN® SA,
BLUESKIN® SALT,
BLUESKIN® BUTYL
FLASH,
METAL CLAD®
OR AIR-BLOC® LF

INSTALL FLANGED
WINDOW PER
WINDOW
MANUFACTURER
REQUIREMENTS

STEP 6

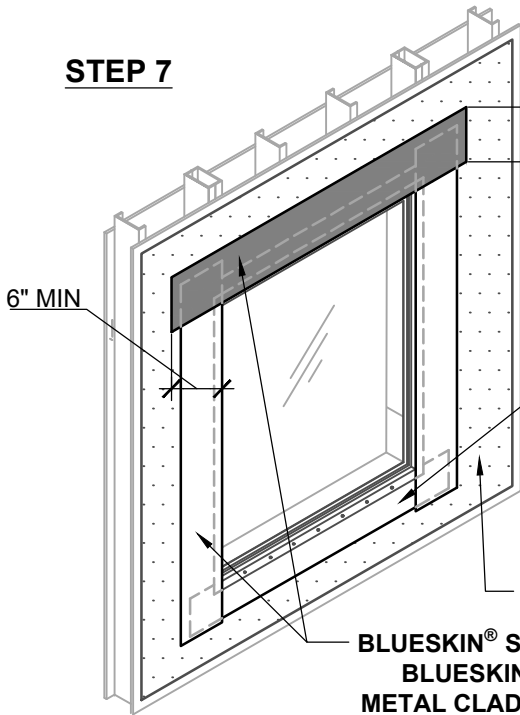


4" MIN

6" MIN (SELF-ADHERED FLASHINGS:
EXTEND JAMB FLASHING 1" MIN
BEYOND SILL FLASHING)

BLUESKIN® SA,
BLUESKIN® SALT,
BLUESKIN® BUTYL FLASH,
METAL CLAD®,
BLUESKIN® VP160 OR
AIR-BLOC® LF

STEP 7



6" MIN

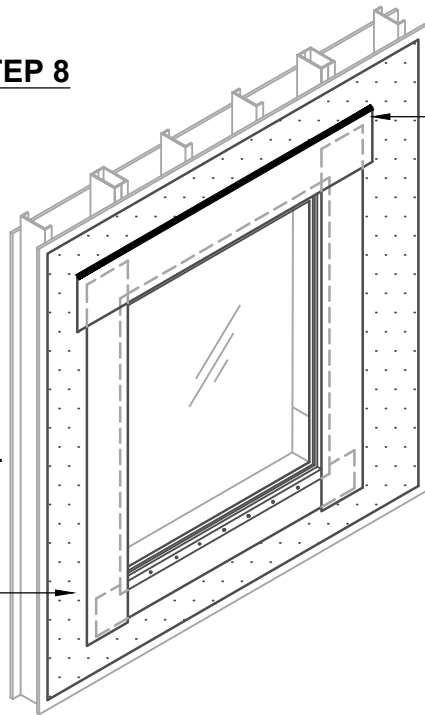
6" MIN
(SELF-ADHERED
FLASHINGS:
EXTEND HEADER
FLASHING 1" MIN
BEYOND JAMB
FLASHINGS)

BLUESKIN® SA,
BLUESKIN® SALT,
BLUESKIN® BUTYL
FLASH,
METAL CLAD®
OR AIR-BLOC® LF

BLUESKIN® VP160

BLUESKIN® SA, BLUESKIN® SALT,
BLUESKIN® BUTYL FLASH,
METAL CLAD®, BLUESKIN® VP160
OR AIR-BLOC® LF

STEP 8



SEAL
REVERSE LAP
EDGES OF
ROUGH
OPENING
FLASHINGS
WITH
212 SEALANT
(TROWEL
SEALANT UNTIL
MEMBRANE IS
FIRMLY
COATED TO
PROMOTE
WATER
SHEDDING)

NOTES:

- REFER TO NOTES BSVP160-6C2A.

Henry®

999 Sepulveda Blvd., Suite 800
El Segundo, CA 90245
800-486-1278 • www.henry.com

MANUFACTURER GUIDE DETAILS ARE FOR REFERENCE ONLY. HENRY® DOES NOT ASSUME RESPONSIBILITY FOR ERRORS OR DEVIATIONS IN DESIGN OR ENGINEERING. PROJECT SPECIFIC VERIFICATION IS RECOMMENDED PRIOR TO INSTALLATION.

BLUESKIN® VP160 SELF-ADHERED WATER RESISTIVE AIR BARRIER

FLANGED WINDOW

METHOD B - BLUESKIN® VP160 INSTALLED
BEFORE FLASHING PART 3 OF 3

SCALE: N.T.S.

06-20-2017

BSVP160-6C2C