

OPTIONAL VAPOR BARRIER  
(AS REQUIRED BY LOCAL  
BUILDING CODE)

**BLUESKIN® VP160**

EXTERIOR SHEATHING

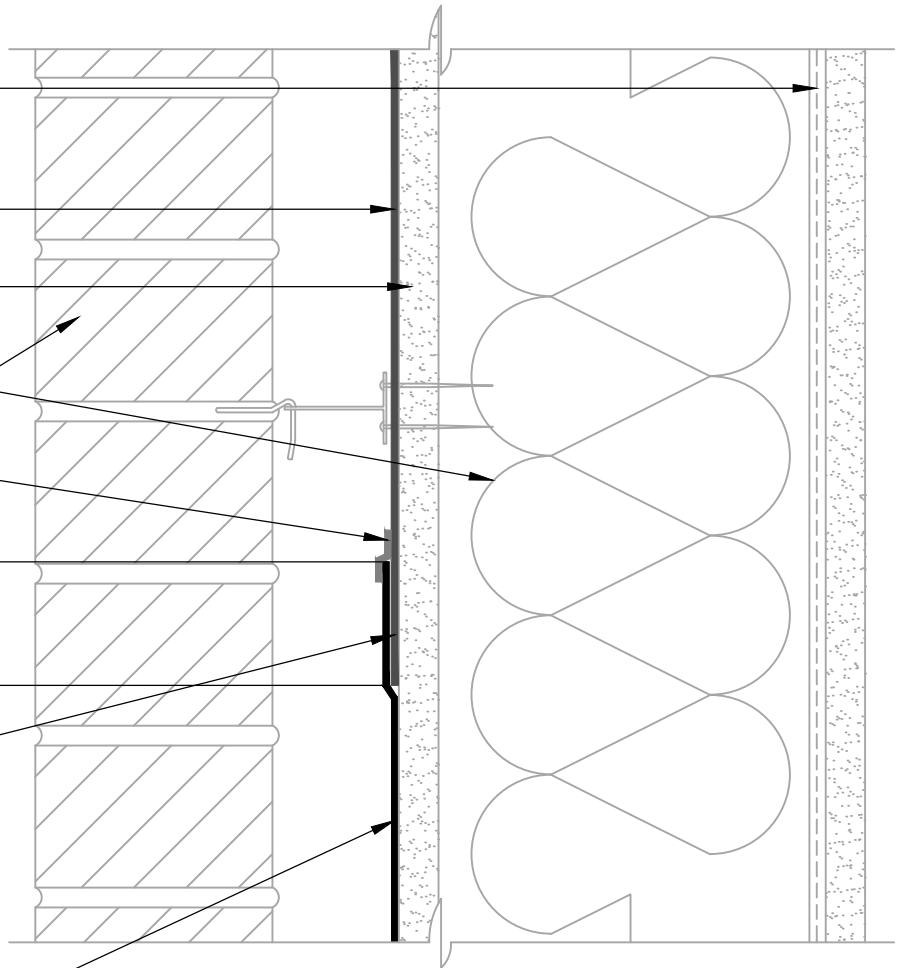
CLADDING AND  
INSULATION AS SPECIFIED

**212 SEALANT**  
(TROWEL SEALANT UNTIL  
MEMBRANE EDGE IS FULLY  
COATED TO PROMOTE  
WATER SHEDDING)

2" MIN OVERLAP AT  
HORIZONTAL SEAMS

INSTALL **BLUESKIN® LVC  
ADHESIVE, AQUATAC™  
PRIMER OR BLUESKIN®  
ADHESIVE** CONTINUOUSLY  
TO ENSURE COMPLETE  
COVERAGE OF  
ANTICIPATED REVERSE  
LAP INSTALLATION AREA

**BLUESKIN® SA,  
BLUESKIN® SALT,  
METAL CLAD® OR  
BLUESKIN® TWF**



**NOTES:**

1. DETAIL SHOWS **BLUESKIN® VP160** ASSEMBLY INSTALLED OVER EXTERIOR GRADE SHEATHING. ACCEPTABLE SUBSTRATES INCLUDE PLYWOOD, OSB, CONCRETE, GYPSUM BOARD AND CONCRETE BLOCK.
2. PRIME **BLUESKIN® VP160** WHERE **BLUESKIN® SA, BLUESKIN® SALT OR METAL CLAD®** LAP ONTO **BLUESKIN® VP160**. RECOMMENDED PRIMERS/ADHESIVES INCLUDE: **BLUESKIN® LVC ADHESIVE, AQUATAC™ PRIMER OR BLUESKIN® ADHESIVE**.
3. INSTALL THE **BLUESKIN® VP160** ASSEMBLY TO PROVIDE A CONTINUOUS AIR AND WATER BARRIER.
4. REFER TO **BLUESKIN® VP160** INSTALLATION MANUAL FOR RECOMMENDED INSTALLATION PROCEDURES.

**Henry®**

999 Sepulveda Blvd., Suite 800  
El Segundo, CA 90245  
800-486-1278 • www.henry.com

MANUFACTURER GUIDE DETAILS ARE FOR REFERENCE ONLY. HENRY® DOES NOT ASSUME RESPONSIBILITY FOR ERRORS OR DEVIATIONS IN DESIGN OR ENGINEERING. PROJECT SPECIFIC VERIFICATION IS RECOMMENDED PRIOR TO INSTALLATION.

**BLUESKIN® VP160 SELF-ADHERED WATER RESISTIVE AIR BARRIER**

**REVERSE LAP**

**BLUESKIN® SA, BLUESKIN® SALT, METAL CLAD® OR  
BLUESKIN® TWF LAPPING ONTO BLUESKIN® VP160**

SCALE: N.T.S.

06-20-2017

**BSVP160-7C1**