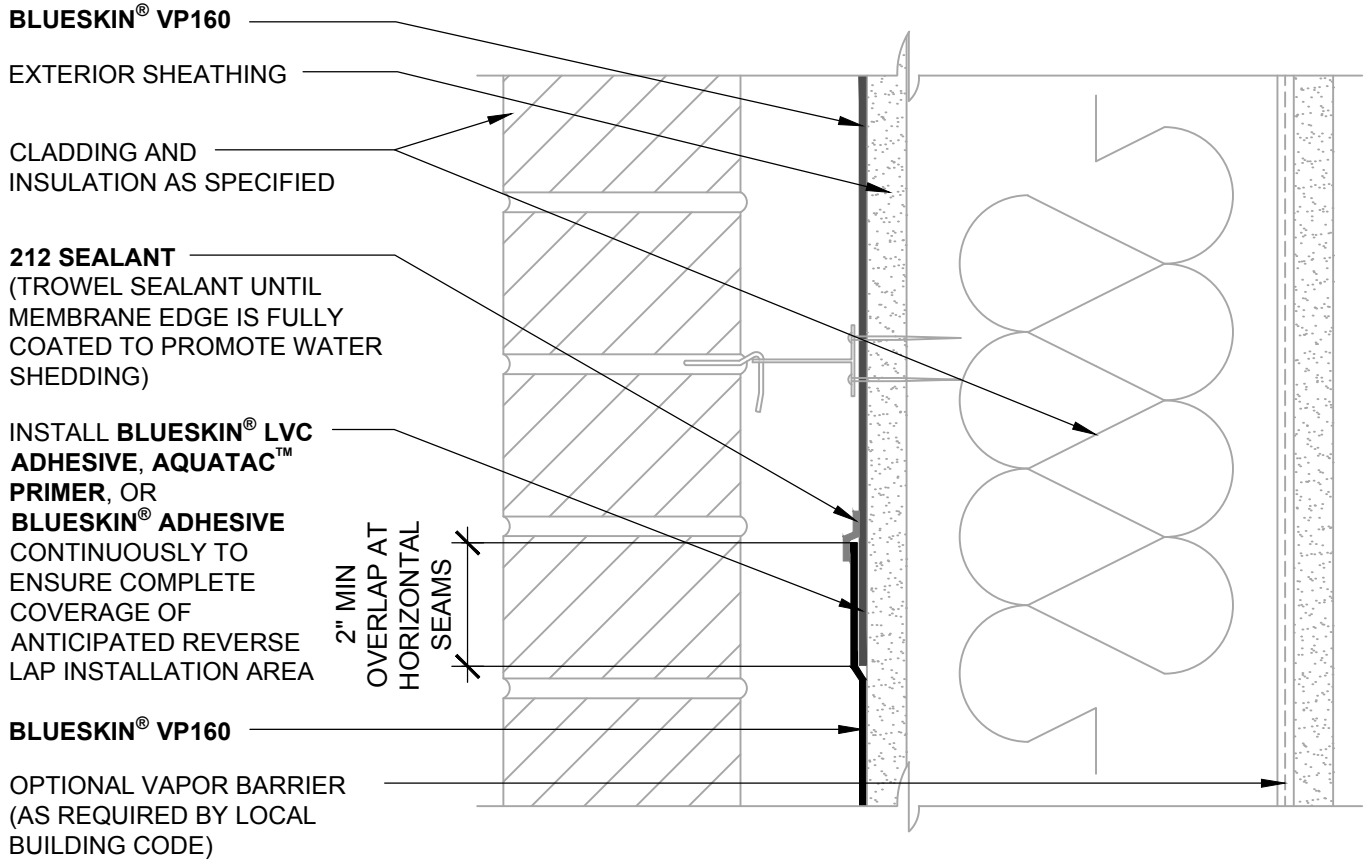


WALL ASSEMBLIES IDENTIFIED AS SPECIAL CONSIDERATIONS AND REQUIRING  
DETAIL CONSIDERATIONS MAY INCLUDE, BUT ARE NOT LIMITED TO, ANY OF THE FOLLOWING:

- PANELIZED WALL ASSEMBLIES
- SLOPED WALL ASSEMBLIES
- RAINSCREEN CLADDING PERMITTING PERMANENT DIRECT EXPOSURE TO BULK WATER ONTO THE PRIMARY WATER RESISTIVE AIR BARRIER WITHIN A COMPLETED WALL ASSEMBLY.
- CLADDINGS IMPEDING DRAINAGE AND/OR PROMOTING HYDROSTATIC PRESSURE SUCH AS HORIZONTAL Z-GIRTS OR FURRING STRIPS INSTALLED DIRECTLY ONTO AIR BARRIER IN A MANNER TO ENCOURAGE WATER COLLECTION.



**NOTES:**

1. DETAIL SHOWS **BLUESKIN® VP160** ASSEMBLY INSTALLED OVER EXTERIOR GRADE SHEATHING. ACCEPTABLE SUBSTRATES INCLUDE PLYWOOD, OSB, CONCRETE, GYPSUM BOARD AND CONCRETE BLOCK.
2. PRIME **BLUESKIN® VP160** WHERE **BLUESKIN® VP160** LAPS ONTO **BLUESKIN® VP160**. RECOMMENDED PRIMERS/ADHESIVES INCLUDE: **BLUESKIN® LVC ADHESIVE, AQUATAC™ PRIMER, BLUESKIN® ADHESIVE**.
3. INSTALL THE **BLUESKIN® VP160** ASSEMBLY TO PROVIDE A CONTINUOUS AIR AND WATER BARRIER.
4. REFER TO **BLUESKIN® VP160** INSTALLATION MANUAL FOR RECOMMENDED INSTALLATION PROCEDURES.

**Henry**®

999 Sepulveda Blvd., Suite 800  
El Segundo, CA 90245  
800-486-1278 • www.henry.com

MANUFACTURER GUIDE DETAILS ARE FOR REFERENCE ONLY. HENRY® DOES NOT ASSUME RESPONSIBILITY FOR ERRORS OR DEVIATIONS IN DESIGN OR ENGINEERING. PROJECT SPECIFIC VERIFICATION IS RECOMMENDED PRIOR TO INSTALLATION.

**BLUESKIN® VP160 SELF-ADHERED WATER RESISTIVE AIR BARRIER**

**REVERSE LAP**

SPECIAL CONSIDERATIONS  
**BLUESKIN® VP160** LAPPING ONTO **BLUESKIN® VP160**

SCALE: N.T.S.

06-20-2017

**BSVP160-7D1**