

PRIMER (SEE NOTES #2 AND #3)

HENRY DUNDEQ GP FLEXCOAT (22 MILS)

HENRY DUNDEQ GP FLEXCOAT (22 MILS)

TOP COAT (20 MILS):

- **HENRY GP TOPCOAT**
- **HENRY PU TOPCOAT (NON-UV RESISTANT)**

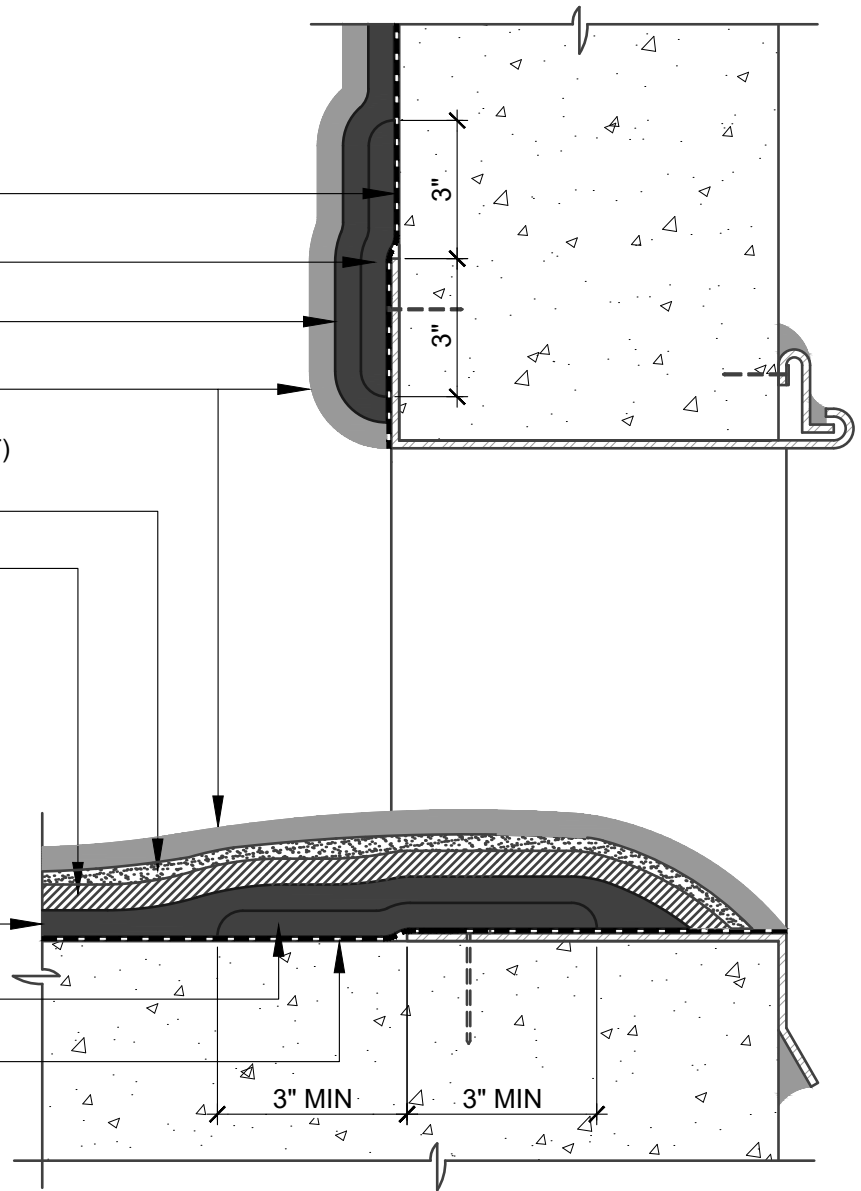
DRY SILICA SAND (SEE NOTE #4)

HENRY GP WEARCOAT (30 MILS)

HENRY DUNDEQ GP FLEXCOAT (22 MILS)

HENRY DUNDEQ GP FLEXCOAT (22 MILS)

PRIMER (SEE NOTES #2 AND #3)



NOTES:

1. DETAIL SHOWS HENRY **DUNDEQ** SYSTEM FULL SEED AND LOCK TRAFFIC COATING. SUBSTRATE SHOWN IS FOR REFERENCE ONLY. REFER TO PRODUCT SPECIFIC TECHNICAL DATA SHEET FOR AUTHORIZED SUBSTRATES.
2. HENRY **DUNDEQ** SYSTEM STANDARD PRIMERS: **HENRY LV PRIMER** AND **HENRY LVXL PRIMER**.
3. OTHER RECOMMENDED PRIMERS INCLUDE: **HENRY ST PRIMER** AND AGGREGATE, **HENRY STXL PRIMER** AND AGGREGATE, **PUMADEQ PRIMER 20** AND AGGREGATE OR **HENRY GC EPOXY PRIMER**. REFER TO THE **DUNDEQ** SYSTEM SUBSTRATE PRIMER GUIDELINES TECH-TALK BULLETIN FOR APPLICATION RECOMMENDATIONS.
4. FULLY BROADCAST, TO REJECTION, DRY SILICA SAND INTO WET WEAR COAT (SIEVE SIZE: #20-50, #12 SILICA OR NJ0-NJ00).
5. MECHANICALLY ATTACH SCUPPER, FLUSH WITH SUBSTRATE, PER SCUPPER MANUFACTURER REQUIREMENTS.
6. DO NOT INSTALL **DUNDEQ** SYSTEM BEYOND PRIMED SURFACES.
7. REFER TO **DUNDEQ** SYSTEM GUIDE SPECIFICATION AND **DUNDEQ** SYSTEM DETAILS FOR RECOMMENDED INSTALLATION PROCEDURES.



999 N. Pacific Coast Highway, Suite 800
 El Segundo, CA 90245
 800-486-1278 • www.henry.com

MANUFACTURER GUIDE DETAILS ARE FOR REFERENCE ONLY. HENRY DOES NOT ASSUME RESPONSIBILITY FOR ERRORS OR DEVIATIONS IN DESIGN OR ENGINEERING. PROJECT SPECIFIC VERIFICATION IS RECOMMENDED PRIOR TO INSTALLATION.

DUNDEQ SYSTEM - PEDESTRIAN/VEHICULAR TRAFFIC COATING

SCUPPER
FULL SEED AND LOCK
PEDESTRIAN AND VEHICULAR TRAFFIC COATINGS

SCALE: N.T.S. 04-10-2020

DUNDEQ-E3