

PRIMER (SEE NOTES #2 AND #3)

HENRY DUNDEQ GP FLEXCOAT (22 MILS)

HENRY DUNDEQ GP FLEXCOAT (22 MILS)

TOP COAT (20 MILS):

- HENRY GP TOPCOAT
- HENRY PU TOPCOAT (NON-UV RESISTANT)

TOP COAT (10 MILS):

- HENRY GP TOPCOAT
- HENRY PU TOPCOAT (NON-UV RESISTANT)

DRY SILICA SAND (SEE NOTE #4)

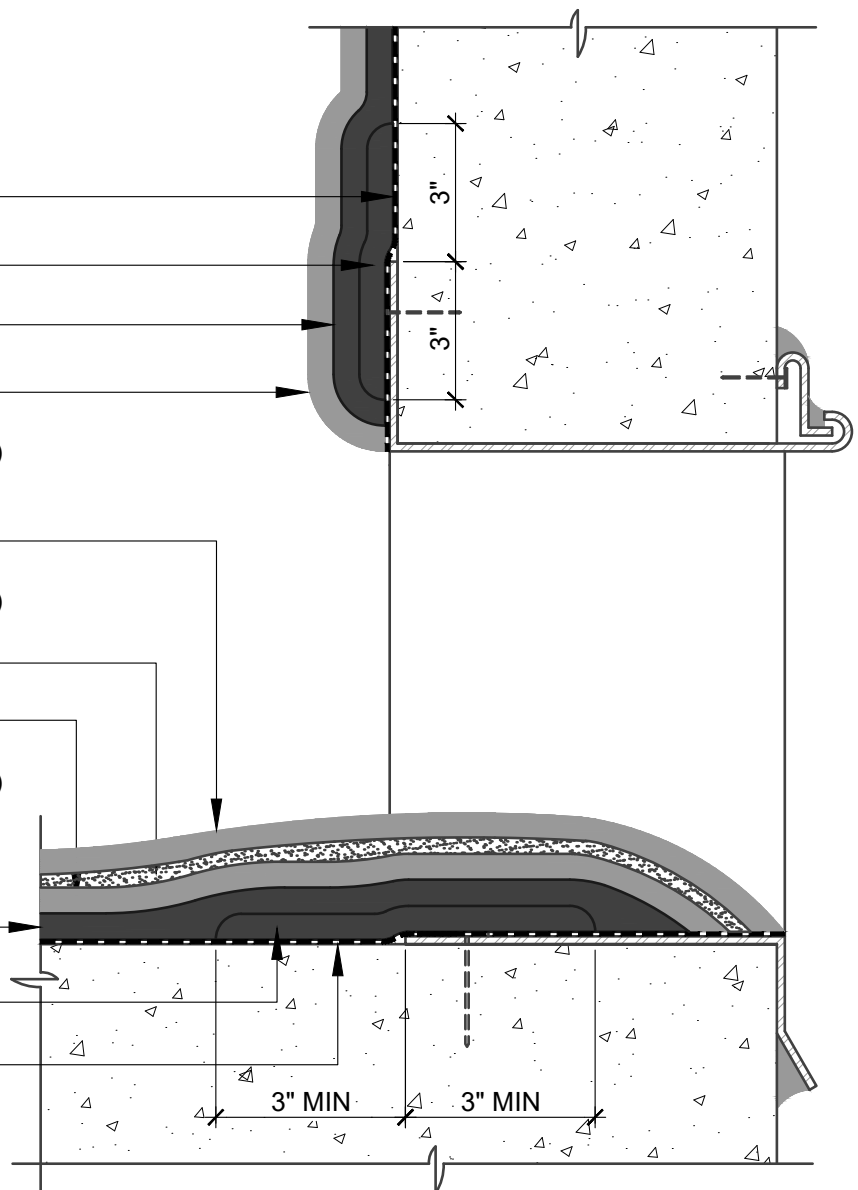
TOP COAT (20 MILS):

- HENRY GP TOPCOAT
- HENRY PU TOPCOAT (NON-UV RESISTANT)

HENRY DUNDEQ GP FLEXCOAT (22 MILS)

HENRY DUNDEQ GP FLEXCOAT (22 MILS)

PRIMER (SEE NOTES #2 AND #3)



NOTES:

1. DETAIL SHOWS HENRY **DUNDEQ** SYSTEM PARTIAL SEED AND LOCK TRAFFIC COATING. SUBSTRATE SHOWN IS FOR REFERENCE ONLY. REFER TO PRODUCT SPECIFIC TECHNICAL DATA SHEET FOR AUTHORIZED SUBSTRATES.
2. HENRY **DUNDEQ** SYSTEM STANDARD PRIMERS: **HENRY LV PRIMER** AND **HENRY LVXL PRIMER**.
3. OTHER RECOMMENDED PRIMERS INCLUDE: **HENRY ST PRIMER** AND AGGREGATE, **HENRY STXL PRIMER** AND AGGREGATE, **PUMADEQ PRIMER 20** AND AGGREGATE OR **HENRY GC EPOXY PRIMER**. REFER TO THE **DUNDEQ** SYSTEM SUBSTRATE PRIMER GUIDELINES TECH-TALK BULLETIN FOR APPLICATION RECOMMENDATIONS.
4. PARTIALLY BROADCAST DRY SILICA SAND INTO FIRST LAYER OF WET TOP COAT (SIEVE SIZE: #20-50, #12 SILICA OR NJ0-NJ00).
5. MECHANICALLY ATTACH SCUPPER, FLUSH WITH SUBSTRATE, PER SCUPPER MANUFACTURER REQUIREMENTS.
6. DO NOT INSTALL **DUNDEQ** SYSTEM BEYOND PRIMED SURFACES.
7. REFER TO **DUNDEQ** SYSTEM GUIDE SPECIFICATION AND **DUNDEQ** SYSTEM DETAILS FOR RECOMMENDED INSTALLATION PROCEDURES.



999 N. Pacific Coast Highway, Suite 800
 El Segundo, CA 90245
 800-486-1278 • www.henry.com

MANUFACTURER GUIDE DETAILS ARE FOR REFERENCE ONLY. HENRY DOES NOT ASSUME RESPONSIBILITY FOR ERRORS OR DEVIATIONS IN DESIGN OR ENGINEERING. PROJECT SPECIFIC VERIFICATION IS RECOMMENDED PRIOR TO INSTALLATION.

DUNDEQ SYSTEM - PEDESTRIAN/VEHICULAR TRAFFIC COATING

SCUPPER

**PARTIAL SEED AND LOCK
 PEDESTRIAN AND VEHICULAR TRAFFIC COATINGS**

SCALE: N.T.S.

04-10-2020

DUNDEQ-E4