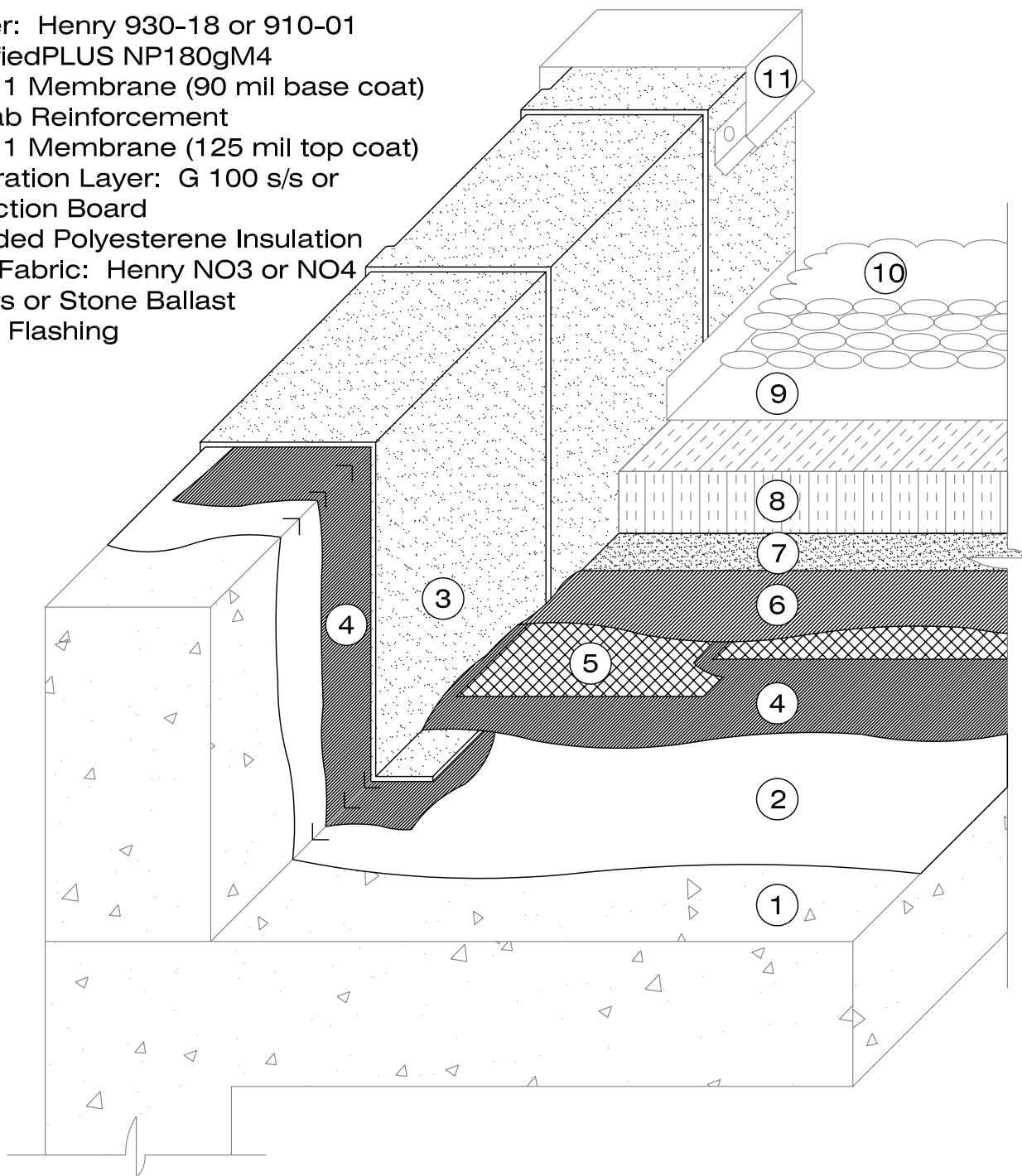


1. Deck
2. Primer: Henry 930-18 or 910-01
3. modifiedPLUS NP180gM4
4. 790-11 Membrane (90 mil base coat)
5. Polyfab Reinforcement
6. 790-11 Membrane (125 mil top coat)
7. Separation Layer: G 100 s/s or Protection Board
8. Extruded Polyesterene Insulation
9. Filter Fabric: Henry NO3 or NO4
10. Pavers or Stone Ballast
11. Metal Flashing



Notes:

1. System detail showing modifiedPLUS NP180gM4 modified bitumen sheet as the flashing membrane. The NP180gM4 is embedded in a 3mm (125mil) coat of 790-11 hot applied rubberized asphalt.
2. The modifiedPLUS NP180gM4 membrane has a ceramic granule surface which is designed to be an exposed finished surface.

Henry
COMPANY

790-11 MEMBRANE P.M.R. ASSEMBLY

SCALE: N.T.S.

CONCRETE DECK - PARAPET

FIT TO PAPER

**SBS FLASHING
SYSTEM DETAIL**

HR-H102