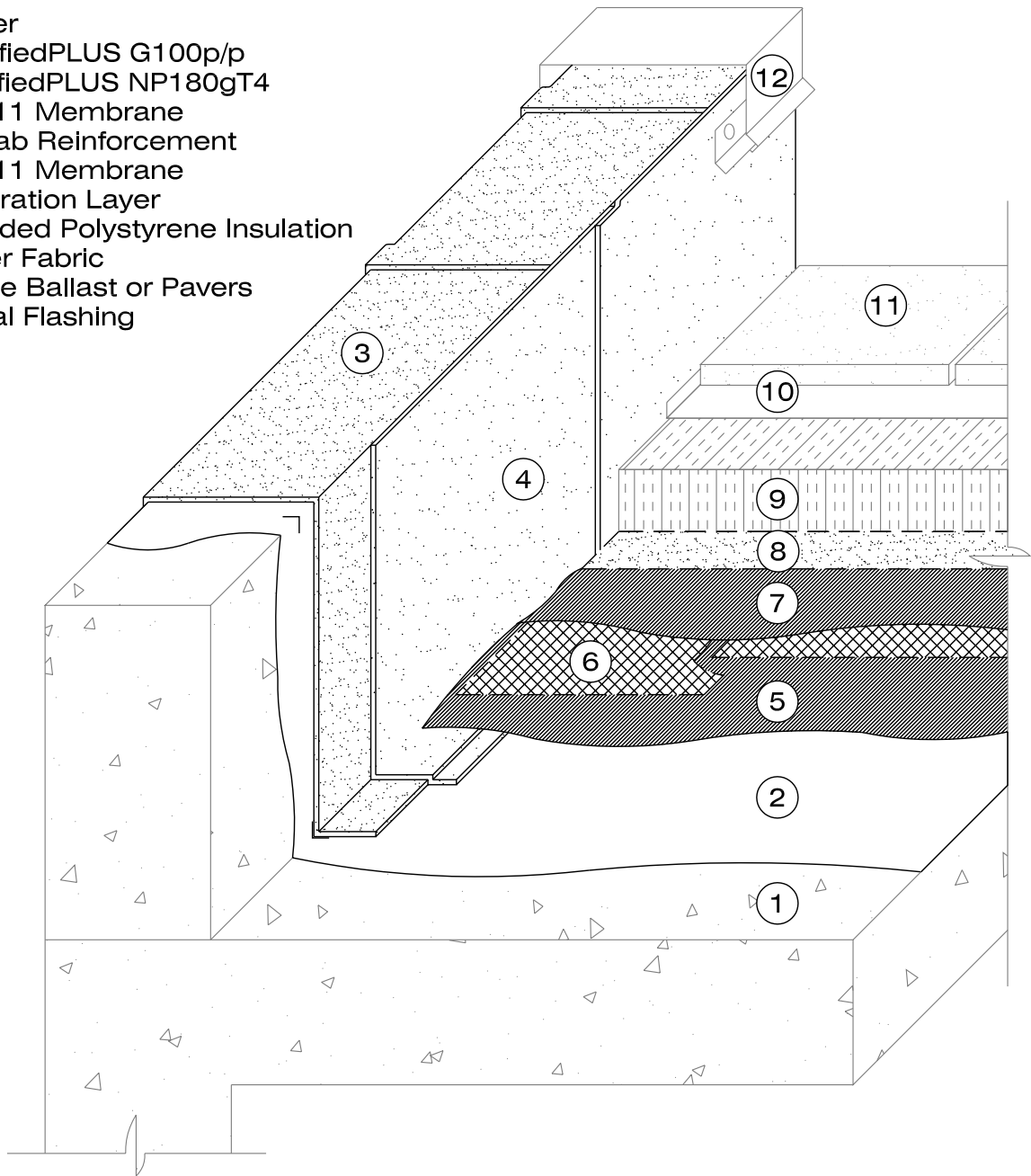


1. Deck
2. Primer
3. modifiedPLUS G100p/p
4. modifiedPLUS NP180gT4
5. 790-11 Membrane
6. Polyfab Reinforcement
7. 790-11 Membrane
8. Separation Layer
9. Extruded Polystyrene Insulation
10. Filter Fabric
11. Stone Ballast or Pavers
12. Metal Flashing



Notes:

1. System detail showing modifiedPLUS G100 p/p and a modifiedPLUS NP180gT4 cap sheet, as a two ply thermofused SBS modified bitumen membrane system.
2. The two SBS modified bitumen membranes are typically thermofused in place prior to applying the 790-11 membrane system.
3. The primers for the 790-11 and the modifiedPLUS membranes are the same. Use wither 930-18, a polymer modified primer, or 910-01, an asphalt penetrating primer.
4. Alternately, for wood parapet use modifiedPLUS NP180 Tack Sheet, a self-adhered base sheet, in place of the modifiedPLUS G100 p/p. Use 900-34 primer for the modifiedPLUS NP180 Tack Sheet.

Henry
COMPANY®

790-11 MEMBRANE P.M.R.ASSEMBLY

SCALE: N.T.S.

CONCRETE DECK - PARAPET

FIT TO PAPER

**2-P THERMOFUSED
SBS SYS. DETAIL**

HR-H104