

**FLASHING INSTALLED AFTER WRB**  
REVERSE LAP

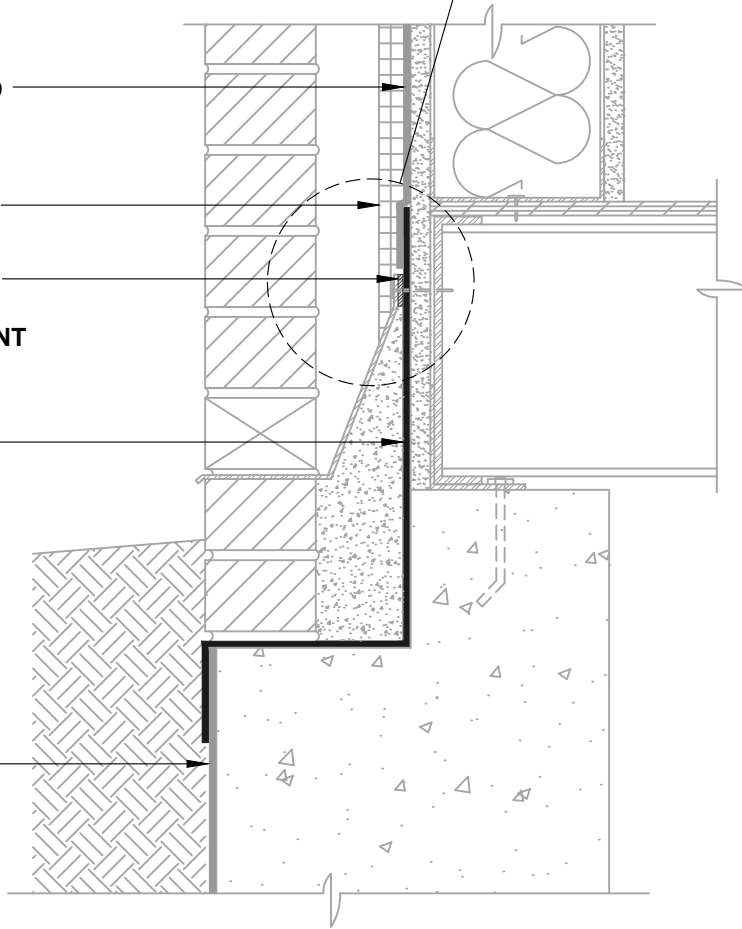
**BLUESKIN METAL CLAD**  
LAP AIR BARRIER  
2" ONTO FLASHING

OPTIONAL INSULATION

SET TERMINATION BAR  
IN A BED OF  
**HENRY 925 BES SEALANT**

**BLUESKIN TWF**

HENRY BELOW GRADE  
WATERPROOFING  
(CONTACT HENRY FOR  
PROJECT SPECIFIC  
RECOMMENDATIONS)



**NOTES:**

1. DETAIL SHOWS **BLUESKIN METAL CLAD SELF-ADHERED WATER RESISTIVE AIR BARRIER**. SUBSTRATE SHOWN IS FOR REFERENCE ONLY. ACCEPTABLE SUBSTRATES INCLUDE PLYWOOD, OSB, CONCRETE, CMU, METAL, AND EXTERIOR GRADE SHEATHING.
2. SELF-ADHERED MEMBRANE PRIMER NOT SHOWN FOR CLARITY.
3. INSTALL **BLUESKIN METAL CLAD** TO ACHIEVE A CONTINUOUS WATER-RESISTIVE BARRIER (WRB). REFER TO LOCAL CODE ORDINANCES FOR INSULATION AND VAPOR BARRIER REQUIREMENTS.
4. REFER TO PRODUCT SPECIFIC TECHNICAL DATA SHEET (TDS) AND **BLUESKIN METAL CLAD** GUIDE SPECIFICATION FOR INSTALLATION PROCEDURES.

MANUFACTURER GUIDE DETAILS ARE FOR REFERENCE ONLY. HENRY DOES NOT ASSUME RESPONSIBILITY FOR ERRORS OR DEVIATIONS IN DESIGN OR ENGINEERING. PROJECT SPECIFIC VERIFICATION IS RECOMMENDED PRIOR TO INSTALLATION.

**BLUESKIN METAL CLAD SELF-ADHERED AIR BARRIER**

**WALL FOUNDATION**  
**EXTERIOR WALL AND FOUNDATION TRANSITION**  
**SLAB BELOW GRADE WITH MASONRY LEDGE**

SCALE: N.T.S. 01-09-2020

**MTLCLD-1A**

**Henry**<sup>®</sup>

999 N. Pacific Coast Highway, Suite 800  
El Segundo, CA 90245  
800-486-1278 • www.henry.com