

**FLASHING INSTALLED AFTER WRB**  
REVERSE LAP

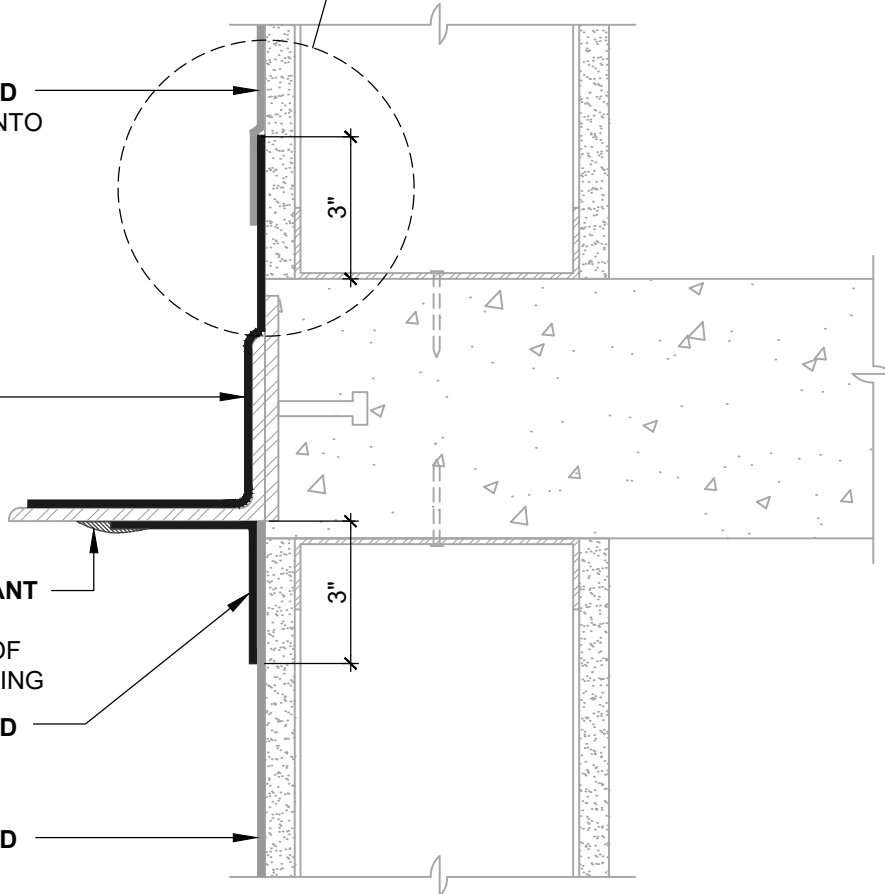
**BLUESKIN METAL CLAD**  
LAP AIR BARRIER 2" ONTO  
FLASHING

**BLUESKIN TWF**

**HENRY 925 BES SEALANT**  
OR **AIR-BLOC LF**  
ENCAPSULATE EDGE OF  
SELF-ADHERED FLASHING

**BLUESKIN METAL CLAD**  
OR **AIR-BLOC LF**  
(SEE NOTE #3)

**BLUESKIN METAL CLAD**



**NOTES:**

1. DETAIL SHOWS **BLUESKIN METAL CLAD SELF-ADHERED WATER RESISTIVE AIR BARRIER**. SUBSTRATE SHOWN IS FOR REFERENCE ONLY. ACCEPTABLE SUBSTRATES INCLUDE PLYWOOD, OSB, CONCRETE, CMU, METAL, AND EXTERIOR GRADE SHEATHING.
2. SELF-ADHERED MEMBRANE PRIMER NOT SHOWN FOR CLARITY.
3. OTHER FLASHING OPTIONS INCLUDE: **BLUESKIN BUTYL FLASH, BLUESKIN SA OR BLUESKIN SA LT.**
4. INSTALL **BLUESKIN METAL CLAD** TO ACHIEVE A CONTINUOUS WATER-RESISTIVE BARRIER (WRB). INSULATION AND CLADDING NOT SHOWN FOR CLARITY. REFER TO LOCAL CODE ORDINANCES FOR INSULATION AND VAPOR BARRIER REQUIREMENTS.
5. REFER TO PRODUCT SPECIFIC TECHNICAL DATA SHEET (TDS) AND **BLUESKIN METAL CLAD** GUIDE SPECIFICATION FOR INSTALLATION PROCEDURES.



999 N. Pacific Coast Highway, Suite 800  
El Segundo, CA 90245  
800-486-1278 • www.henry.com

MANUFACTURER GUIDE DETAILS ARE FOR REFERENCE ONLY. HENRY DOES NOT ASSUME RESPONSIBILITY FOR ERRORS OR DEVIATIONS IN DESIGN OR ENGINEERING. PROJECT SPECIFIC VERIFICATION IS RECOMMENDED PRIOR TO INSTALLATION.

**BLUESKIN METAL CLAD SELF-ADHERED AIR BARRIER**

**THRU-WALL FLASHING**

**DISSIMILAR SUBSTRATE TRANSITIONS**  
**CONTINUOUS LINTEL/STEEL ANGLE**

SCALE: N.T.S.

01-09-2020

**MTLCLD-5A**