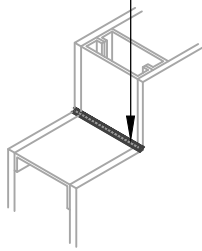
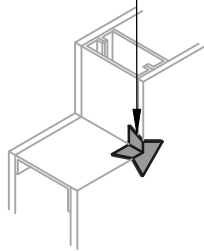


**OPTION #1**  
GUSSET

**OPTION #2**  
SEALANT

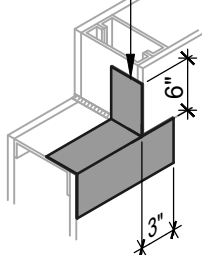
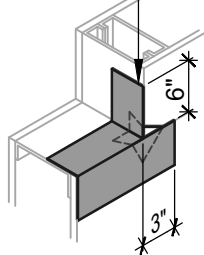
BLUESKIN  
METAL CLAD

HENRY 925 BES SEALANT  
OR AIR-BLOC LF



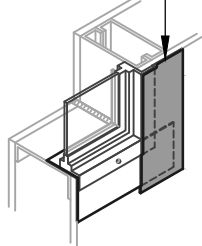
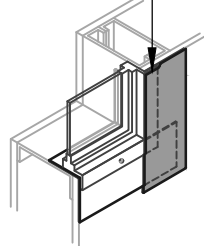
BLUESKIN  
METAL CLAD

BLUESKIN  
METAL CLAD  
OR AIR-BLOC LF



BLUESKIN  
METAL CLAD

BLUESKIN  
METAL CLAD  
OR AIR-BLOC LF



**WINDOW SILL/JAMB FLASHING**  
SEALANT AND GUSSET METHODS

BLUESKIN METAL CLAD  
LAP AIR BARRIER 2" ONTO  
FLASHING

BLUESKIN METAL CLAD  
OR AIR-BLOC LF

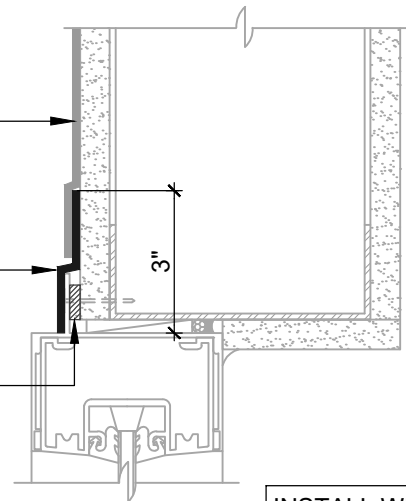
SET WINDOW FLANGE  
INTO A BED OF  
HENRY 925 BES SEALANT

BLUESKIN METAL CLAD  
OR AIR-BLOC LF  
EXTEND FLASHING  
3" (SUGGESTED) INTO  
ROUGH OPENING (2" MIN)

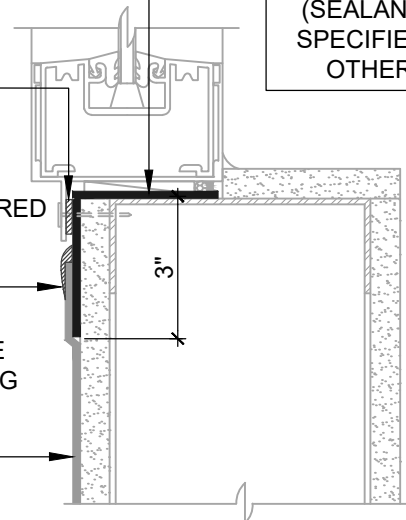
SET WINDOW FLANGE  
INTO A BED OF  
HENRY 925 BES SEALANT  
APPLY INTERMITTENTLY ON  
SILL FLANGE WHERE REQUIRED  
TO ALLOW DRAINAGE

HENRY 925 BES SEALANT  
OR AIR-BLOC LF  
ENCAPSULATE UPPER EDGE  
OF SELF-ADHERED FLASHING  
REVERSE LAP

BLUESKIN METAL CLAD  
LAP AIR BARRIER 2" ONTO  
FLASHING



INSTALL WINDOW  
PER WINDOW  
MANUFACTURER  
REQUIREMENTS  
(SEALANT AS  
SPECIFIED BY  
OTHERS)



**ASTM E2112 - METHOD A (SECTION VIEW)**  
FLASHING INSTALLED BEFORE WRB

**NOTES:**

1. DETAIL SHOWS **BLUESKIN METAL CLAD SELF-ADHERED WATER RESISTIVE AIR BARRIER**. SUBSTRATE SHOWN IS FOR REFERENCE ONLY. ACCEPTABLE SUBSTRATES INCLUDE PLYWOOD, OSB, CONCRETE, CMU, METAL, AND EXTERIOR GRADE SHEATHING.
2. SELF-ADHERED MEMBRANE PRIMER NOT SHOWN FOR CLARITY.
3. OTHER FLASHING OPTIONS INCLUDE: **BLUESKIN BUTYL FLASH, BLUESKIN SA OR BLUESKIN SA LT.**
4. HENRY WINDOW FLASHING DETAILS ARE BASED ON ASTM E2112. ACTUAL CONDITIONS MAY VARY. VERIFY PROJECT SPECIFIC WINDOW INSTALLATION REQUIREMENTS AND FLASHING COMPATIBILITY WITH DESIGN PROFESSIONAL.
5. INSTALL **BLUESKIN METAL CLAD** TO ACHIEVE A CONTINUOUS WATER-RESISTIVE BARRIER (WRB). INSULATION AND CLADDING NOT SHOWN FOR CLARITY.
6. REFER TO PRODUCT SPECIFIC TECHNICAL DATA SHEET (TDS) AND **BLUESKIN METAL CLAD** GUIDE SPECIFICATION FOR INSTALLATION PROCEDURES.

**Henry**<sup>®</sup>

999 N. Pacific Coast Highway, Suite 800  
El Segundo, CA 90245  
800-486-1278 • www.henry.com

MANUFACTURER GUIDE DETAILS ARE FOR REFERENCE ONLY. HENRY DOES NOT ASSUME RESPONSIBILITY FOR ERRORS OR DEVIATIONS IN DESIGN OR ENGINEERING. PROJECT SPECIFIC VERIFICATION IS RECOMMENDED PRIOR TO INSTALLATION.

**BLUESKIN METAL CLAD SELF-ADHERED AIR BARRIER**

**FLANGED WINDOW**

**ASTM E2112 METHOD A  
FLASHING INSTALLED BEFORE WRB**

SCALE: N.T.S.

01-09-2020

**MTLCLD-6A-A**