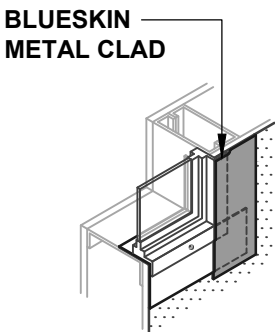
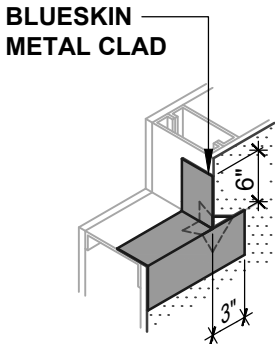
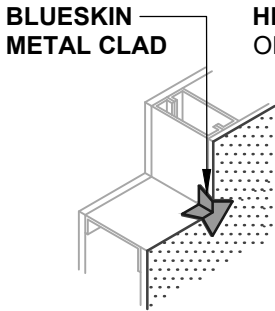
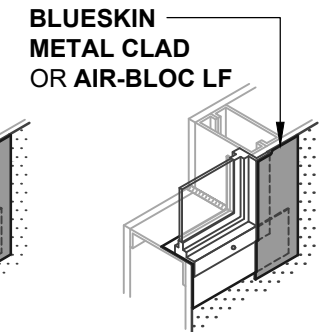
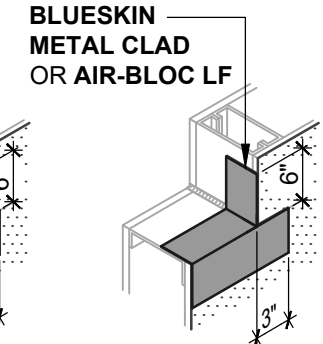
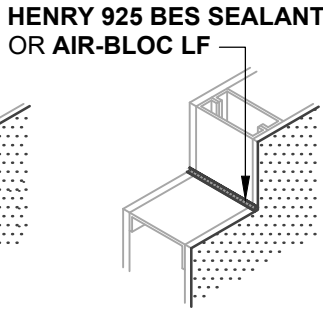


OPTION #1
GUSSET



OPTION #2
SEALANT



BLUESKIN METAL CLAD

HENRY 925 BES SEALANT
OR **AIR-BLOC LF**
ENCAPSULATE UPPER EDGE
OF SELF-ADHERED FLASHING
REVERSE LAP

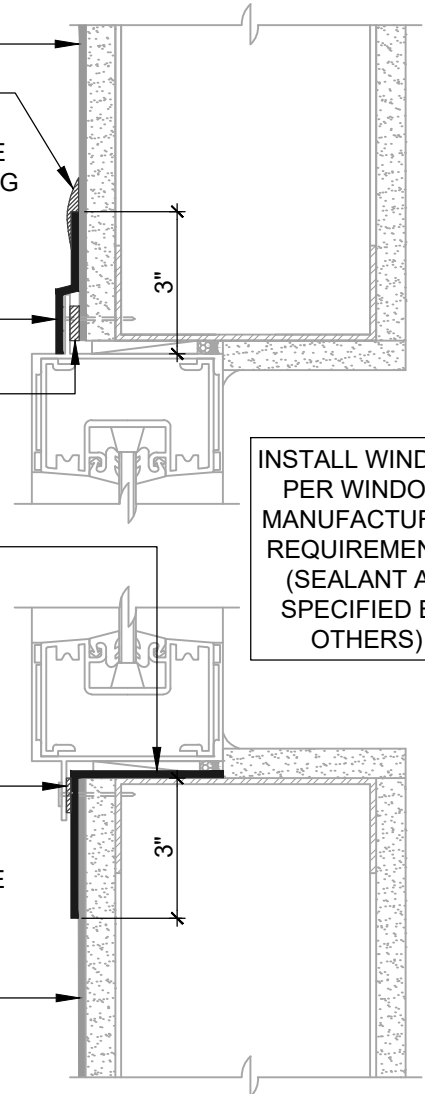
BLUESKIN METAL CLAD
OR **AIR-BLOC LF**

SET WINDOW FLANGE
INTO A BED OF
HENRY 925 BES SEALANT

BLUESKIN METAL CLAD
OR **AIR-BLOC LF**
EXTEND FLASHING
3" (SUGGESTED) INTO
ROUGH OPENING (2" MIN)

SET WINDOW FLANGE
INTO A BED OF
HENRY 925 BES SEALANT
ENCAPSULATE UPPER EDGE
OF SELF-ADHERED
FLASHING REVERSE LAP

BLUESKIN METAL CLAD



INSTALL WINDOW
PER WINDOW
MANUFACTURER
REQUIREMENTS
(SEALANT AS
SPECIFIED BY
OTHERS)

WINDOW SILL/JAMB FLASHING
SEALANT AND GUSSET METHODS

ASTM E2112- METHOD A1 (SECTION VIEW)
FLASHING INSTALLED AFTER WRB

NOTES:

1. DETAIL SHOWS **BLUESKIN METAL CLAD SELF-ADHERED WATER RESISTIVE AIR BARRIER**. SUBSTRATE SHOWN IS FOR REFERENCE ONLY. ACCEPTABLE SUBSTRATES INCLUDE PLYWOOD, OSB, CONCRETE, CMU, METAL, AND EXTERIOR GRADE SHEATHING.
2. SELF-ADHERED MEMBRANE PRIMER NOT SHOWN FOR CLARITY.
3. OTHER FLASHING OPTIONS INCLUDE: **BLUESKIN BUTYL FLASH, BLUESKIN SA OR BLUESKIN SA LT.**
4. HENRY WINDOW FLASHING DETAILS ARE BASED ON ASTM E2112. ACTUAL CONDITIONS MAY VARY. VERIFY PROJECT SPECIFIC WINDOW INSTALLATION REQUIREMENTS AND FLASHING COMPATIBILITY WITH DESIGN PROFESSIONAL.
5. INSTALL **BLUESKIN METAL CLAD** TO ACHIEVE A CONTINUOUS WATER-RESISTIVE BARRIER (WRB). INSULATION AND CLADDING NOT SHOWN FOR CLARITY.
6. REFER TO PRODUCT SPECIFIC TECHNICAL DATA SHEET (TDS) AND **BLUESKIN METAL CLAD** GUIDE SPECIFICATION FOR INSTALLATION PROCEDURES.

Henry[®]

999 N. Pacific Coast Highway, Suite 800
El Segundo, CA 90245
800-486-1278 • www.henry.com

MANUFACTURER GUIDE DETAILS ARE FOR REFERENCE ONLY. HENRY DOES NOT ASSUME RESPONSIBILITY FOR ERRORS OR DEVIATIONS IN DESIGN OR ENGINEERING. PROJECT SPECIFIC VERIFICATION IS RECOMMENDED PRIOR TO INSTALLATION.

BLUESKIN METAL CLAD SELF-ADHERED AIR BARRIER

FLANGED WINDOW

ASTM E2112 METHOD A1
FLASHING INSTALLED AFTER WRB

SCALE: N.T.S.

01-09-2020

MTLCLD-6A1-A