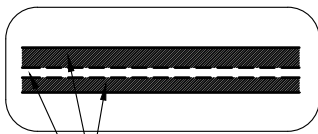


**PUMADEQ™ SYSTEM WATERPROOFING ASSEMBLY  
REINFORCED FIELD MEMBRANE SEQUENCE OF INSTALLATION**

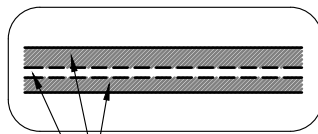
- ① PUMADEQ™ PRIMER 20 OR HENRY® GC PRIMER
- ② PUMADEQ™ FLEX 31MV REINFORCED FLASHING
- ③ PUMADEQ™ FLEX 31MV REINFORCED FLASHING (3A AND 3B)
- ④ PUMADEQ™ FLEX 31MV REINFORCED VERTICAL FLASHING
- ⑤ OPTIONAL TOP/WEAR COAT AS SPECIFIED PER PROJECT SPECIFIC REQUIREMENTS (REFER TO PUMADEQ™ SYSTEM DETAILS)
  - HENRY® DEQCOAT™ 50 TOP COAT
  - PUMADEQ™ GRIP 40 WEAR COAT

**PUMADEQ™ FLEX 31MV  
REINFORCED FLASHING**

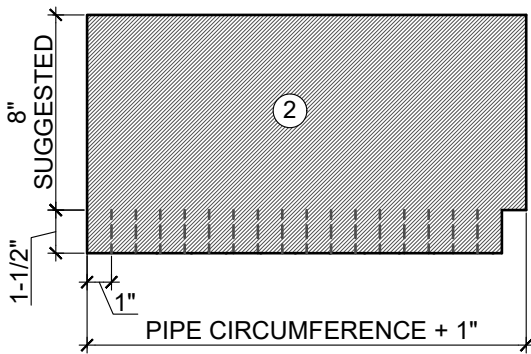


PUMADEQ™ FLEX 31MV  
PUMADEQ™ N-FLEECE

**PUMADEQ™ FLEX 30SL  
REINFORCED FIELD MEMBRANE**

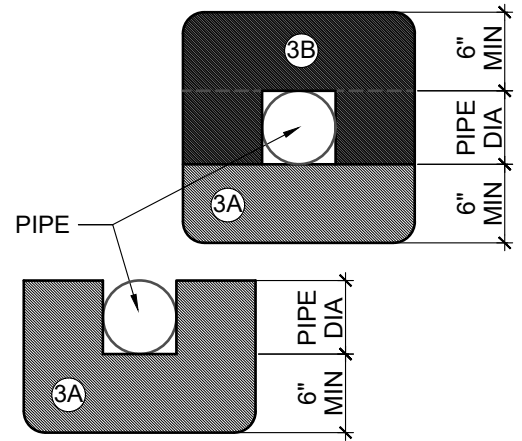


PUMADEQ™ FLEX 30SL  
PUMADEQ™ N-FLEECE

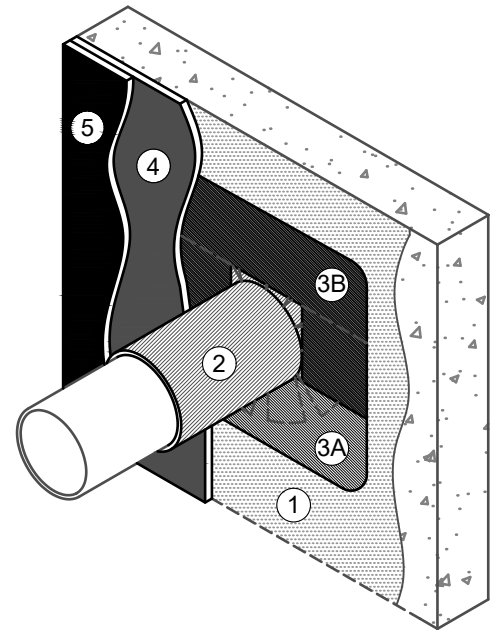


**FINGER FLASHING TEMPLATE**

INSTALL 2 PIECE TARGET FLASHING  
OVER FINGER FLASHING AS SHOWN IN  
STEPS 3A AND 3B



**TARGET FLASHING TEMPLATE**



**NOTES:**

1. DETAIL SHOWS HENRY® PUMADEQ™ SYSTEM WATERPROOFING ASSEMBLY WITH A REINFORCED FIELD MEMBRANE. SUBSTRATE SHOWN IS FOR REFERENCE ONLY. REFER TO PRODUCT SPECIFIC TECHNICAL DATA SHEET FOR AUTHORIZED SUBSTRATES.
2. FORM A COOL SLEEVE AROUND PIPES HOTTER THAN 150 °F.
3. PREPARE AND PRIME VERTICAL SUBSTRATES A MINIMUM 2" BEYOND PUMADEQ™ SYSTEM APPLICATION IN ACCORDANCE WITH HENRY® PUMADEQ™ SYSTEM SUBSTRATE PREPARATION GUIDELINES TECH-TALK BULLETIN.
4. DO NOT INSTALL PUMADEQ™ SYSTEM BEYOND PRIMED SURFACES.
5. BACK COAT FLEECE ON VERTICAL SURFACES WITH PUMADEQ™ RESIN.
6. REFER TO PUMADEQ™ SYSTEM GUIDE SPECIFICATION FOR RECOMMENDED INSTALLATION PROCEDURES.

**Henry®**

999 N. Pacific Coast Highway, Suite 800  
El Segundo, CA 90245  
800-486-1278 • www.henry.com

MANUFACTURER GUIDE DETAILS ARE FOR REFERENCE ONLY. HENRY® DOES NOT ASSUME RESPONSIBILITY FOR ERRORS OR DEVIATIONS IN DESIGN OR ENGINEERING. PROJECT SPECIFIC VERIFICATION IS RECOMMENDED PRIOR TO INSTALLATION.

**PUMADEQ™ SYSTEM - WATERPROOFING ASSEMBLY**

**PIPE PENETRATION  
REINFORCED FIELD MEMBRANE WITH  
TOP OR WEAR COAT ON A VERTICAL SUBSTRATE**

SCALE: N.T.S.

04-26-2019

**PUMADEQ-P3B**