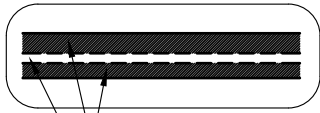


**PUMADEC™ SYSTEM WATERPROOFING ASSEMBLY
UNREINFORCED FIELD MEMBRANE SEQUENCE OF INSTALLATION**

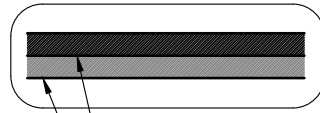
- ① PUMADEC™ PRIMER 20 OR HENRY® GC PRIMER
- ② PUMADEC™ FLEX 31MV REINFORCED FLASHING
- ③ PUMADEC™ FLEX 31MV REINFORCED FLASHING (3A AND 3B)
- ④ PUMADEC™ FLEX 31MV REINFORCED VERTICAL FLASHING
- ⑤ OPTIONAL TOP/WEAR COAT AS SPECIFIED PER PROJECT SPECIFIC REQUIREMENTS (REFER TO PUMADEC™ SYSTEM DETAILS)
 - HENRY® DEQCOAT™ 50 TOP COAT
 - PUMADEC™ GRIP 40 WEAR COAT

**PUMADEC™ FLEX 31MV
REINFORCED FLASHING**

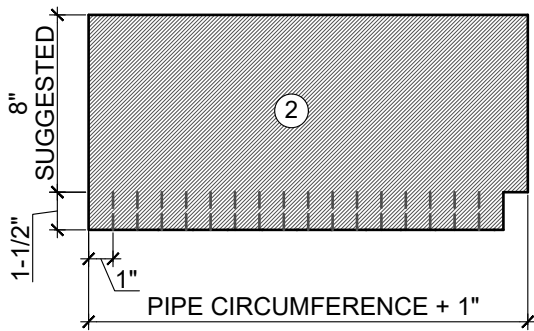


PUMADEC™ FLEX 31MV
PUMADEC™ N-FLEECE

**PUMADEC™ FLEX 30SL
UNREINFORCED FIELD MEMBRANE**

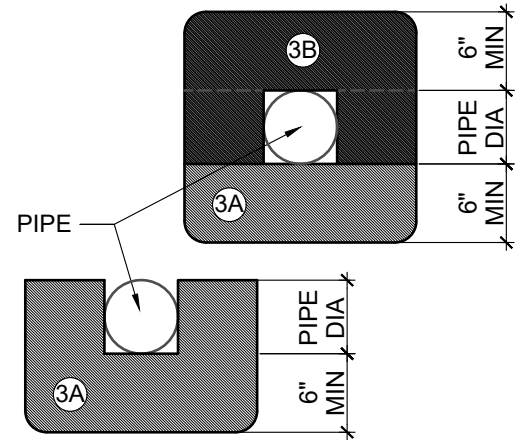


PUMADEC™ FLEX 30SL
(WHITE)
PUMADEC™ FLEX 30SL
(GRAY)

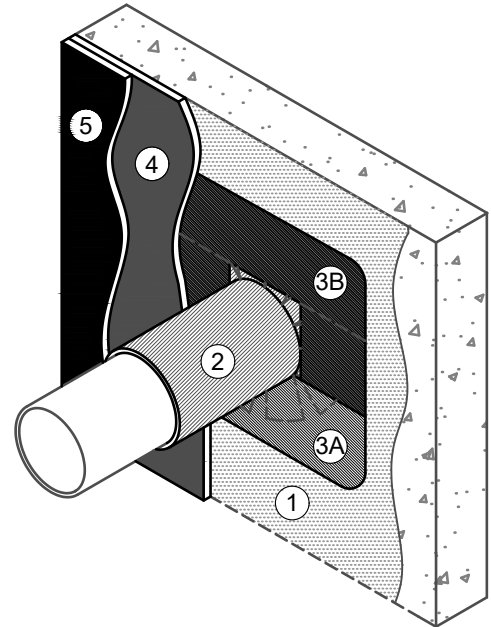


FINGER FLASHING TEMPLATE

INSTALL 2 PIECE TARGET FLASHING
OVER FINGER FLASHING AS SHOWN IN
STEPS 3A AND 3B



TARGET FLASHING TEMPLATE



NOTES:

1. DETAIL SHOWS HENRY® PUMADEC™ SYSTEM WATERPROOFING ASSEMBLY WITH AN UNREINFORCED FIELD MEMBRANE. SUBSTRATE SHOWN IS FOR REFERENCE ONLY. REFER TO PRODUCT SPECIFIC TECHNICAL DATA SHEET FOR AUTHORIZED SUBSTRATES.
2. SURFACE PROFILES MUST MEET ICRI CSP 3-4. IF CSP 5, REFER TO REINFORCED PUMADEC™ SYSTEM DETAILS.
3. FORM A COOL SLEEVE AROUND PIPES HOTTER THAN 150 °F.
4. PREPARE AND PRIME VERTICAL SUBSTRATES A MINIMUM 2" BEYOND PUMADEC™ SYSTEM APPLICATION IN ACCORDANCE WITH HENRY® PUMADEC™ SYSTEM SUBSTRATE PREPARATION GUIDELINES TECH-TALK BULLETIN.
5. DO NOT INSTALL PUMADEC™ SYSTEM BEYOND PRIMED SURFACES.
6. BACK COAT FLEECE ON VERTICAL SURFACES WITH PUMADEC™ RESIN.
7. REFER TO PUMADEC™ SYSTEM GUIDE SPECIFICATION FOR RECOMMENDED INSTALLATION PROCEDURES.

Henry®

999 N. Pacific Coast Highway, Suite 800
El Segundo, CA 90245
800-486-1278 • www.henry.com

MANUFACTURER GUIDE DETAILS ARE FOR REFERENCE ONLY. HENRY® DOES NOT ASSUME RESPONSIBILITY FOR ERRORS OR DEVIATIONS IN DESIGN OR ENGINEERING. PROJECT SPECIFIC VERIFICATION IS RECOMMENDED PRIOR TO INSTALLATION.

PUMADEC™ SYSTEM - WATERPROOFING ASSEMBLY

**PIPE PENETRATION
UNREINFORCED FIELD MEMBRANE
ON A VERTICAL SUBSTRATE**

SCALE: N.T.S.

04-26-2019

PUMADEC-P3D