

SET DOOR THRESHOLD PAN IN A BED OF WET SEALANT (BY OTHERS)

OPTIONAL HENRY GP TOPCOAT (20 MILS)

PAVER SYSTEM OR GRAVEL BALLAST

PERFORATED EDGE RESTRAINT

GROWING MEDIA (VEGETATION NOT SHOWN FOR CLARITY)

FILTER FABRIC

OPTIONAL MOISTURE RETENTION FABRIC

WATER RETENTION AND DRAINAGE COMPOSITE

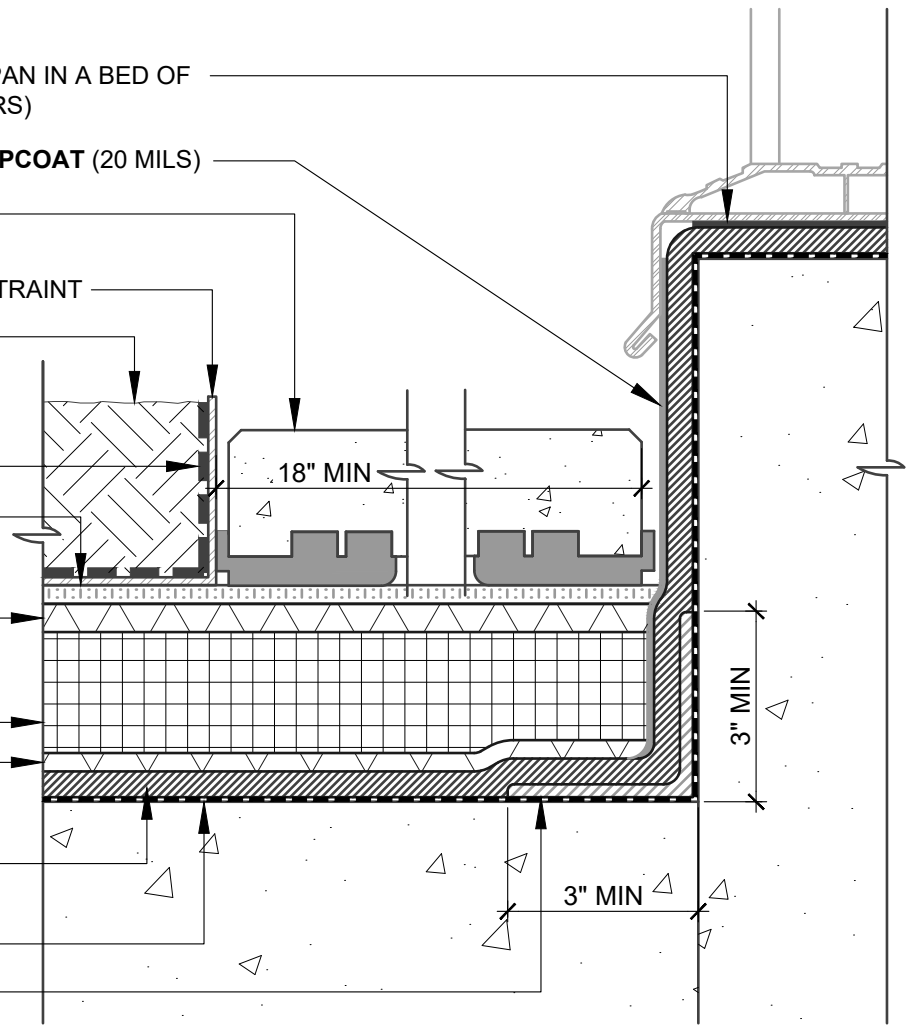
INSULATION

OPTIONAL DRAINAGE COMPOSITE

HENRY PRODEQ FX 400 (100 MILS)

PRIMER (SEE NOTE #2)

HENRY PRODEQ FX 400 (40 MILS)



**NOTES:**

1. DETAIL SHOWS HENRY VEGETATIVE ROOFING WITH **PRODEQ** SYSTEM WATERPROOFING ASSEMBLY. SUBSTRATE SHOWN IS FOR REFERENCE ONLY. REFER TO PRODUCT SPECIFIC TECHNICAL DATA SHEET FOR AUTHORIZED SUBSTRATES.
2. THE STANDARD PRIMER FOR THE HENRY **PRODEQ** SYSTEM IS **HENRY ST PRIMER** WITH AGGREGATE. OTHER RECOMMENDED PRIMERS INCLUDE: **HENRY LV PRIMER**, **HENRY STXL PRIMER** WITH AGGREGATE, **PUMADEQ PRIMER 20** WITH AGGREGATE AND **HENRY GC EPOXY PRIMER**. REFER TO PRODUCT SPECIFIC DATA SHEET FOR PRODUCT SPECIFIC INFORMATION.
3. DO NOT INSTALL **PRODEQ** SYSTEM BEYOND PRIMED SURFACES.
4. DEPTH OF GROWING MEDIA MAY VARY DEPENDING ON PROJECT SPECIFIC REQUIREMENTS.
5. DETAIL IS FOR REFERENCE ONLY. REFER TO DESIGN PROFESSIONAL TO VERIFY WIND UPLIFT MINIMUM REQUIREMENTS.
6. REFER TO THE **PRODEQ** SYSTEM GUIDE SPECIFICATION AND WATERPROOFING DETAILS FOR RECOMMENDED INSTALLATION PROCEDURES.

**Henry**<sup>®</sup>

999 N. Pacific Coast Hwy, Suite 800  
 El Segundo, CA 90245  
 800-486-1278 • www.henry.com

MANUFACTURER GUIDE DETAILS ARE FOR REFERENCE ONLY. HENRY<sup>®</sup> DOES NOT ASSUME RESPONSIBILITY FOR ERRORS OR DEVIATIONS IN DESIGN OR ENGINEERING. PROJECT SPECIFIC VERIFICATION IS RECOMMENDED PRIOR TO INSTALLATION.

**VEGETATIVE ROOFING - PRODEQ SYSTEM**

**DOOR THRESHOLD  
 TYPICAL PRODEQ SYSTEM  
 UPTURN FLASHING AT DOOR THRESHOLD**

SCALE: N.T.S. 06-01-2020

**VR-PDEQ-9A**