

ROUND OR SQUARE TUBE PENETRATION  
(ABRADED AND CLEANED)

OPTIONAL TOP COAT HENRY DEQCOAT 50

PAVER SYSTEM OR  
GRAVEL BALLAST

PERFORATED EDGE RESTRAINT

GROWING MEDIA  
(VEGETATION NOT  
SHOWN FOR CLARITY)

FILTER FABRIC

OPTIONAL MOISTURE  
RETENTION FABRIC

WATER RETENTION  
AND DRAINAGE  
COMPOSITE

INSULATION

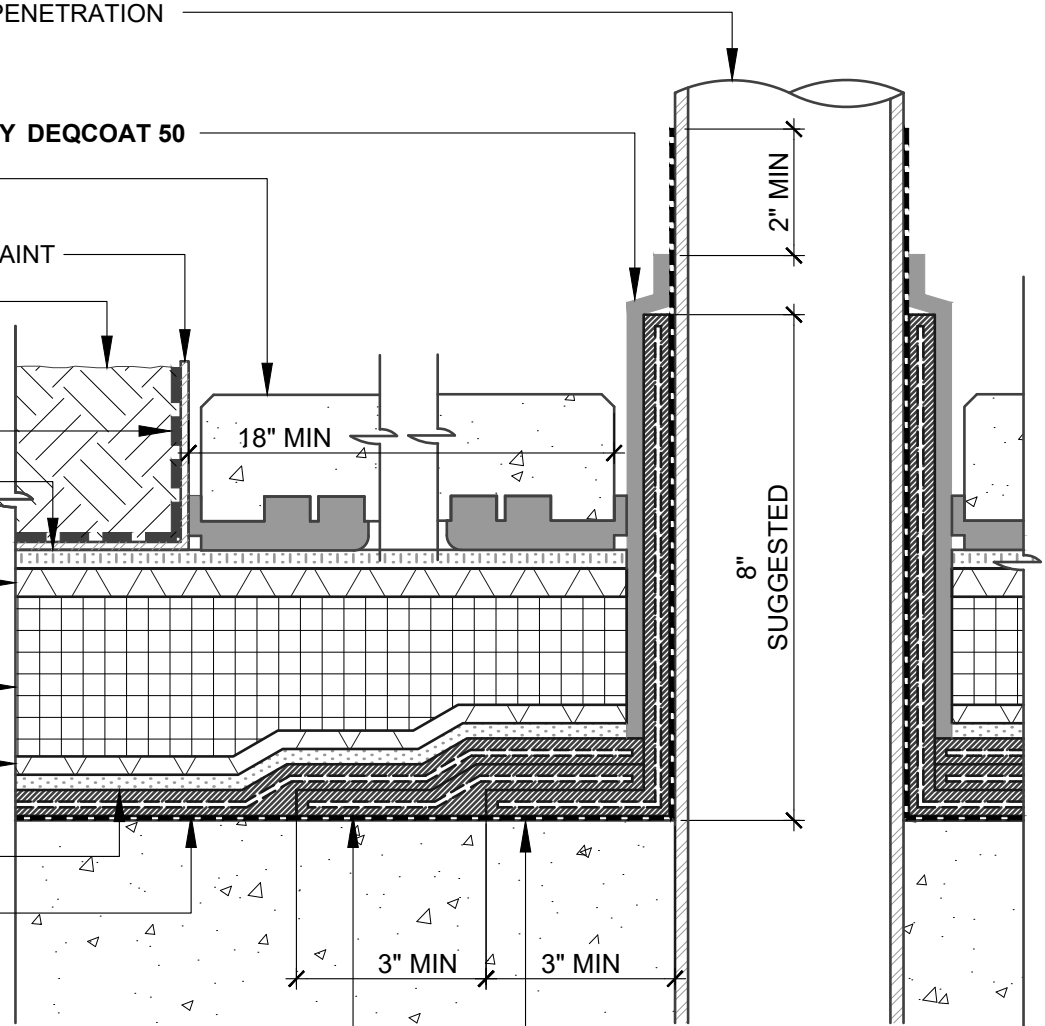
OPTIONAL DRAINAGE  
COMPOSITE

ROOT BARRIER

**PUMADEC FLEX 30SL**  
(80 MILS)  
REINFORCED WITH  
**PUMADEC N-FLEECE**

**TARGET/FINGER FLASHING**  
**PUMADEC FLEX 31MV** (80 MILS)  
REINFORCED WITH  
**PUMADEC N-FLEECE**

**PUMADEC PRIMER 20 OR HENRY GC PRIMER**



**NOTES:**

1. DETAIL SHOWS HENRY VEGETATIVE ROOFING WITH **PUMADEC** SYSTEM WATERPROOFING ASSEMBLY WITH A REINFORCED FIELD MEMBRANE. SUBSTRATE SHOWN IS FOR REFERENCE ONLY. REFER TO PRODUCT SPECIFIC TECHNICAL DATA SHEET FOR AUTHORIZED SUBSTRATES.
2. DO NOT INSTALL **PUMADEC** SYSTEM BEYOND PRIMED SURFACES.
3. BACK COAT FLEECE ON VERTICAL SURFACES WITH **PUMADEC** RESIN.
4. FORM A COOL SLEEVE AROUND PIPES HOTTER THAN 150 °F.
5. DEPTH OF GROWING MEDIA MAY VARY DEPENDING ON PROJECT SPECIFIC REQUIREMENTS.
6. DETAIL IS FOR REFERENCE ONLY. REFER TO DESIGN PROFESSIONAL TO VERIFY WIND UPLIFT REQUIREMENTS.
7. REFER TO THE **PUMADEC** SYSTEM GUIDE SPECIFICATION AND WATERPROOFING DETAILS FOR RECOMMENDED INSTALLATION PROCEDURES.

**Henry**<sup>®</sup>

999 N. Pacific Coast Hwy, Suite 800  
El Segundo, CA 90245  
800-486-1278 • www.henry.com

MANUFACTURER GUIDE DETAILS ARE FOR REFERENCE ONLY. HENRY DOES NOT ASSUME RESPONSIBILITY FOR ERRORS OR DEVIATIONS IN DESIGN OR ENGINEERING. PROJECT SPECIFIC VERIFICATION IS RECOMMENDED PRIOR TO INSTALLATION.

**VEGETATIVE ROOFING - PUMADEC SYSTEM**

**PIPE PENETRATION**

**REINFORCED FIELD MEMBRANE (CSP 3-5)  
PIPE PENETRATION ON A HORIZONTAL SUBSTRATE**

SCALE: N.T.S.

06-01-2020

**VR-PUMA-R7A**