

SET DOOR THRESHOLD PAN IN A
BED OF WET SEALANT (BY OTHERS)

SEALANT (BY OTHERS)

OPTIONAL TOP COAT **HENRY DEQCOAT 50**

PAVER SYSTEM OR
GRAVEL BALLAST

PERFORATED EDGE RESTRAINT

GROWING MEDIA
(VEGETATION NOT
SHOWN FOR CLARITY)

FILTER FABRIC

OPTIONAL MOISTURE
RETENTION FABRIC

WATER RETENTION AND
DRAINAGE COMPOSITE

INSULATION

OPTIONAL DRAINAGE
COMPOSITE

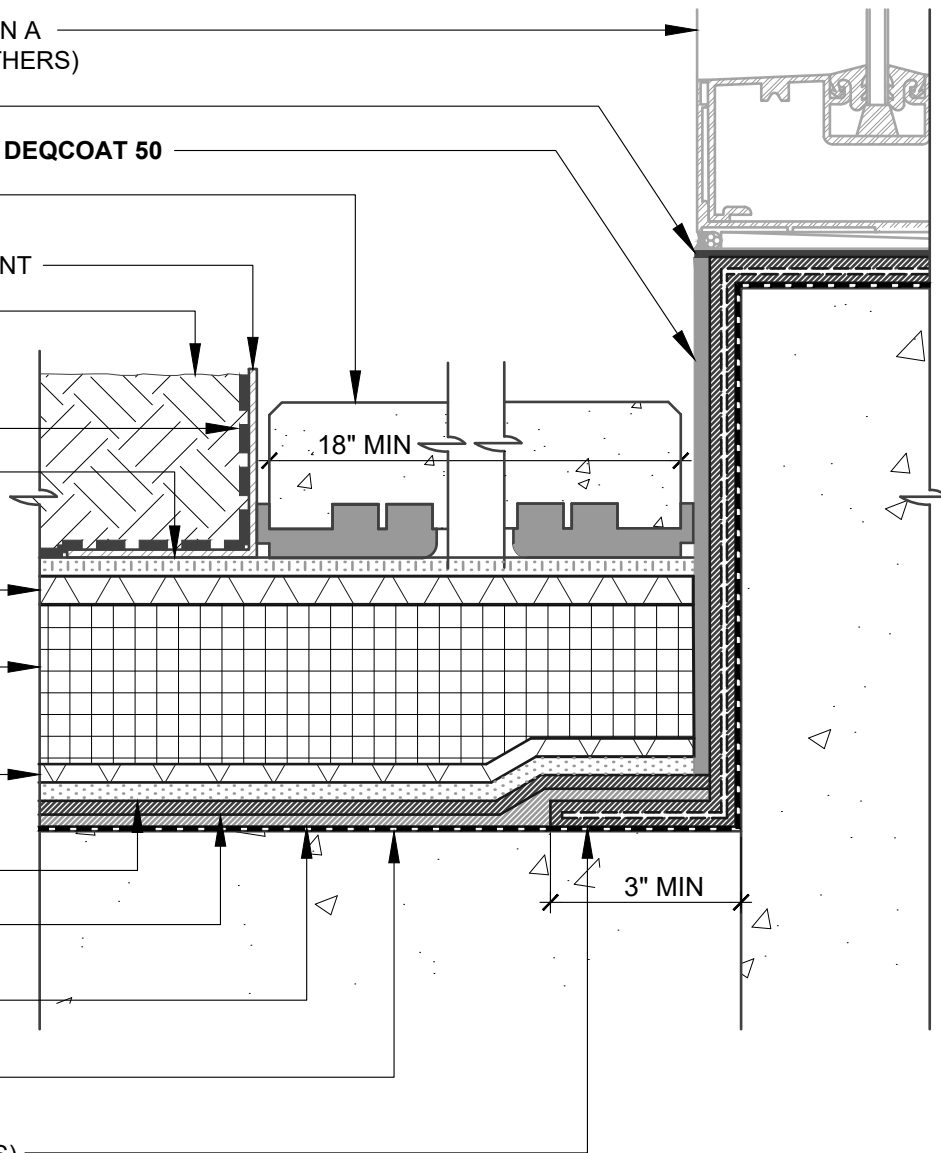
ROOT BARRIER

PUMADEQ FLEX 30SL
(WHITE - 30 MILS)

PUMADEQ FLEX 30SL
(GRAY - 50 MILS)

PUMADEQ PRIMER 20
OR **HENRY GC PRIMER**

PUMADEQ FLEX 30SL (80 MILS)
REINFORCED WITH **PUMADEQ N-FLEECE**



NOTES:

1. DETAIL SHOWS HENRY VEGETATIVE ROOFING WITH **PUMADEQ** SYSTEM WATERPROOFING ASSEMBLY WITH AN UNREINFORCED FIELD MEMBRANE. SUBSTRATE SHOWN IS FOR REFERENCE ONLY. REFER TO PRODUCT SPECIFIC TECHNICAL DATA SHEET FOR AUTHORIZED SUBSTRATES.
2. SURFACE PROFILES MUST MEET ICRI CSP 3-4. IF CSP 5, REFER TO REINFORCED **PUMADEQ** SYSTEM DETAILS. DO NOT INSTALL **PUMADEQ** SYSTEM BEYOND PRIMED SURFACES.
3. DO NOT INSTALL **PUMADEQ** SYSTEM BEYOND PRIMED SURFACES.
4. BACK COAT FLEECE ON VERTICAL SURFACES WITH **PUMADEQ** RESIN.
5. DEPTH OF GROWING MEDIA MAY VARY DEPENDING ON PROJECT SPECIFIC REQUIREMENTS.
6. DETAIL IS FOR REFERENCE ONLY. REFER TO DESIGN PROFESSIONAL TO VERIFY WIND UPLIFT REQUIREMENTS.
7. REFER TO THE **PUMADEQ** SYSTEM GUIDE SPECIFICATION AND WATERPROOFING DETAILS FOR RECOMMENDED INSTALLATION PROCEDURES.

Henry[®]

999 N. Pacific Coast Hwy, Suite 800
El Segundo, CA 90245
800-486-1278 • www.henry.com

MANUFACTURER GUIDE DETAILS ARE FOR REFERENCE ONLY. HENRY[®] DOES NOT ASSUME RESPONSIBILITY FOR ERRORS OR DEVIATIONS IN DESIGN OR ENGINEERING. PROJECT SPECIFIC VERIFICATION IS RECOMMENDED PRIOR TO INSTALLATION.

VEGETATIVE ROOFING - PUMADEQ SYSTEM

WINDOW SILL

**UNREINFORCED FIELD MEMBRANE (CSP 3-4)
UPTURN FLASHING AT WINDOW SILL**

SCALE: N.T.S.

06-01-2020

VR-PUMA-U9B