

## Henry® Base Drain Universal Tees Connection to Dewatering and Drainage Systems

Henry Base Drain Universal Tees have a double housing outlet to connect a Henry Drain Board Base Drain to a dewatering or drainage system. Secure and seal Henry Base Drain Universal Tees to drainage pipe with Henry Blueskin PreSeal Tape 120V.

### Pipe configurations

- 4" (100mm) smooth, PVC pipe: attach Henry Base Drain Universal Tee to inner bell housing
- 4" (100mm) corrugated, HDPE pipe: attach Henry Base Drain Universal Tee to outer bell housing
- Other pipe diameters: attach Henry Base Drain Universal Tee to a pipe increaser or decreaser fitting

### Henry Base Drain Universal Tee Connections

Images in the figures below are examples of a Henry Base Drain Universal Tee Connection. Refer to Henry Drain Board Base Drain technical data sheet (TDS) and Henry pre-applied waterproofing details to verify installation requirements.



Figure 1

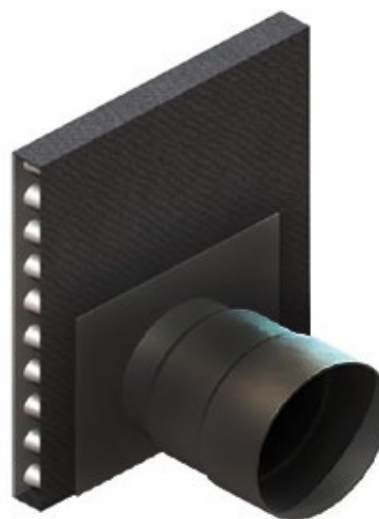


Figure 2