



Henry® Air-Bloc® All Weather STPE™

Fluid Applied Vapor Permeable Air Barrier

Spray on faster. Stay on schedule.

A vapor permeable membrane with long-term UV resistance, **Henry® Air-Bloc® All Weather STPE™** is a single-component, moisture cure Silyl Terminated Polyether (STPE) water-resistive air barrier membrane. Featuring a high solids content and quick cure time, **Air-Bloc All Weather STPE** can be applied with rain in the forecast, helping to reduce job-site weather delays – its hydrophobic characteristics mean that it won't wash off in the rain. Plus, it can be spray-, roller- or brush-applied in temperatures down to 10 °F.

Fully compatible with Henry air barrier flashings and sealants, **Air-Bloc All Weather STPE** is the latest addition to our fluid applied air barrier system offering. For more than 30 years, innovative Henry air barrier solutions like **Air-Bloc All Weather STPE** have been helping the industry build with confidence.

Features and benefits



High solids, fast curing, hydrophobic formulation won't shrink while curing or wash off in the rain; can be applied at temperatures as low as 10 °F



Can be left exposed for up to 12 months during construction, allowing for scheduling flexibility



Permanent UV exposure behind open-joint cladding offers added design flexibility



Sprayable, one-coat application and high coverage rate for faster installation



Single-component, vapor permeable membrane allows walls to breathe and dry

Henry Air-Bloc All Weather STPE Air Barrier System



Air-Bloc All Weather STPE can be spray-, roller-, or brush-applied for fast, one-coat coverage. Combined with Henry flashings, sealants and accessories, the Air-Bloc All Weather STPE system offers excellent wash-off resistance and long-term UV stability.

Recommended system components

Air barrier

- 1 Air-Bloc All Weather STPE

Flashing options

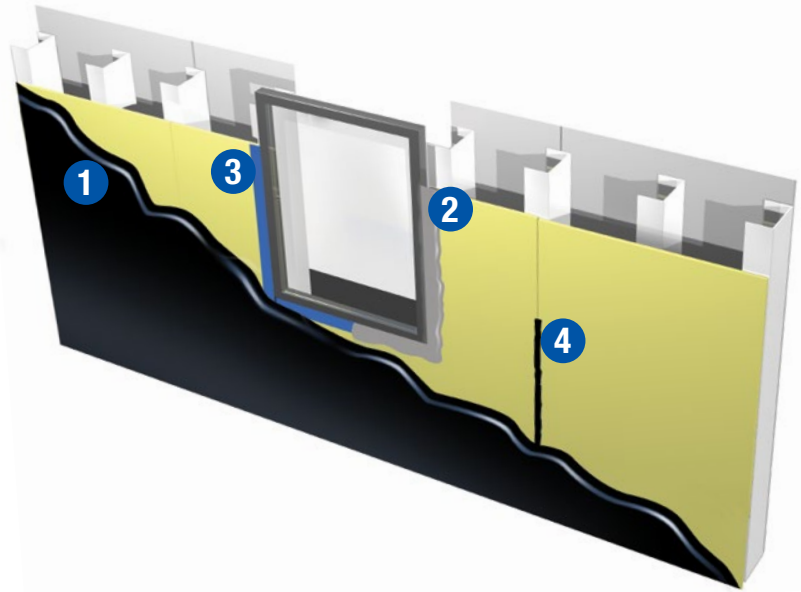
- 2 Air-Bloc LF® Liquid-Applied Flashing
- 3 Henry Blueskin® SA/SA LT

Sealant and joint treatment

- 4 Henry 925 BES Sealant

Other compatible flashings include:

- Henry Blueskin Butyl Flash
- Henry Metal Clad®
- Henry Blueskin TWF



Key attributes of Air-Bloc All Weather STPE

Single-component, one-coat, monolithic application	✓	Nail sealability	✓
Permanent UV exposure under open joint cladding	✓	NFPA 285: meets 2015 IBC 1403.5 exception #2	✓
Excellent wash-off resistance; rain ready within 30 minutes	✓	Declare label	✓
Can be applied down to 10 °F	✓	Vapor permeable	✓
Can be applied to damp substrate	✓	Ultra-low VOC	✓

See product Technical Data Sheet for specific physical properties.

Coverage rates and film thickness by substrate

Substrate	Wet/dry film thickness (mils)	Coverage rate (ft ² /gallon)	Coverage rate (m ² /gallon)
Smooth surfaces (gypsum, sheathing and OSB)	20/20 [†]	60 - 75	5.5 - 7.0
Rough surfaces (CMU and concrete)	20/20 [†]	40 - 60	3.75 - 5.5

[†] Typical

Henry, Air-Bloc, Blueskin, Metal Clad and Building Envelope Systems are registered trademarks of the Henry Company.

Henry®

Building Envelope Systems®
Roofing | Air Barrier | Waterproofing

Ask us today about other Henry® solutions that help manage the flow of water, air, vapor and energy.